



DATASHEET

WME-019

19" Compact Enclosures
Outdoor Installations

CONTEG

WME-019 COMPACT ENCLOSURES

19" OUTDOOR INSTALLATIONS



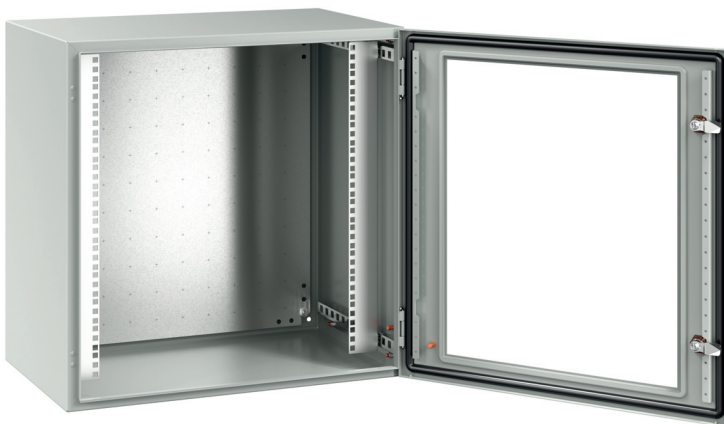
WME-019-060604

➤ **WME-019 compact stainless steel enclosures** with surface finish resistant to UV radiation are ideal for outdoor installations and can be equipped with e.g. a roof to protect them from rain and sun rays. The structural design of this series offers high rigidity of the entire enclosure and the back panel. Manufacturing by laser welding technology lends the enclosures a clean design. On request, CONTEG can also make cut-outs and perforations required for installation of equipment into enclosures.

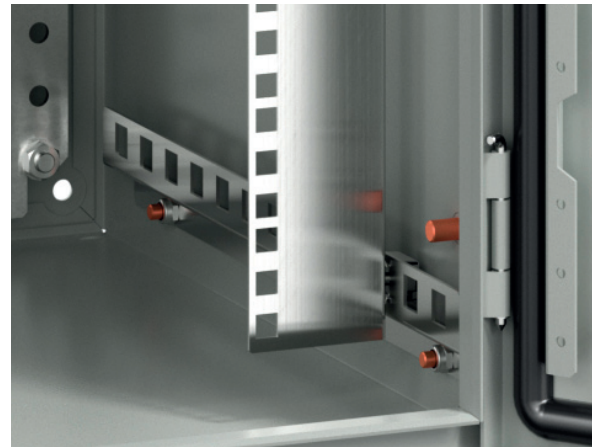
MAIN ADVANTAGES

- 1 pair of 19" extrusions
- Mounting plate with a marked raster 50 × 50 mm
- 2 door options—solid, or glazed
- Perforated mounting rails on the doors
- Perforated mounting rails on the sides
- Accessories for wall-mounting
- Rotary lock or 3-point locking system
- Left/right door hinge replacement
- Degree of protection IP66

COLOR:  RAL 7035



WME-019-G-060604



WME-019-060604 (detail of a 19" fixed extrusion)

DESCRIPTION

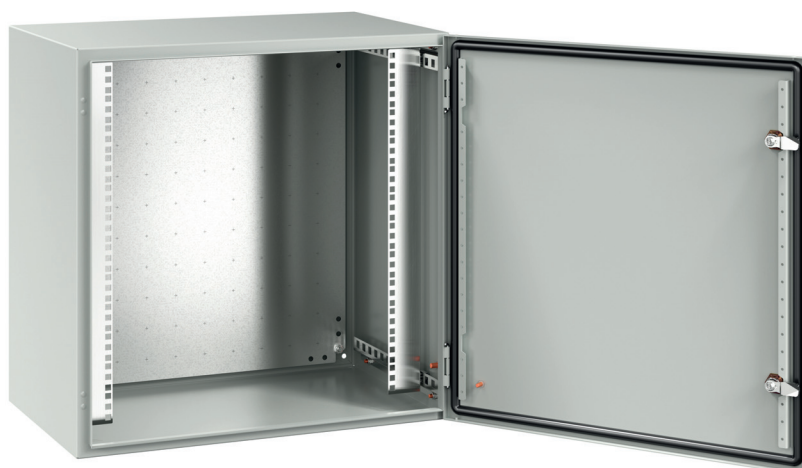
- | | | | |
|--------------------------------------------------------------------------------------------------------------------------------------------------------------------------------------------------------------------------------------------------------------------------------------------------------------------|----------------------------------------------------------------------------------------------------------------------------------------------------------------------------------------------------------------------------------------------------------------------------------------------------------------------------------------------------------------------------------|-----------------------------------------------------------------------------------------------------------------------------------------------------------------------------------------------------------------------------------------------------------------------------------------------------------------------------------------------|------------------------------------------------------------------------------------------------------------------------------------------------------------------------------------------------------------------------------------------------------------------------------------------------------------------------------------------------------------------------------------------------|
| Material <ul style="list-style-type: none">• Enclosure: stainless steel 1.4016 (AISI 403), on request stainless steel 1.4301 (AISI 304)• Mounting plate: zinc-plated sheet steel• 19" extrusions: zinc-plated sheet steel• Glazed door version: 4mm hardened glass | Enclosure surface finish <ul style="list-style-type: none">• Polyester powder coating Color <ul style="list-style-type: none">• RAL 7035 for outdoor use Degree of protection <ul style="list-style-type: none">• IP66 according to EN 60529 (the degree of protection may be reduced after mounting accessories) | Mechanical durability <ul style="list-style-type: none">• IK10 according to IEC 62262• IK08 for glass Supply includes <p>Single-door enclosure. The doors are equipped with a polyurethane foam seal all around the perimeter and a rotary lock or 3-point locking system from a height of 1 000 mm.</p> | <ul style="list-style-type: none">• Perforated mounting rails on the doors• Perforated mounting rails on the sides• Mounting plate with a marked raster 50 × 50 mm• 19" extrusions, 1 pair• Accessories for wall-mounting• Clean design, without cable glands• Cut outs for installation in the CONTEG Modification Center |
|--------------------------------------------------------------------------------------------------------------------------------------------------------------------------------------------------------------------------------------------------------------------------------------------------------------------|----------------------------------------------------------------------------------------------------------------------------------------------------------------------------------------------------------------------------------------------------------------------------------------------------------------------------------------------------------------------------------|-----------------------------------------------------------------------------------------------------------------------------------------------------------------------------------------------------------------------------------------------------------------------------------------------------------------------------------------------|------------------------------------------------------------------------------------------------------------------------------------------------------------------------------------------------------------------------------------------------------------------------------------------------------------------------------------------------------------------------------------------------|

COMPACT ENCLOSURES, SINGLE-DOOR, HEIGHT 600—1000 mm								
Enclosure	H (mm)		600	600	800	800	1000	1000
	W (mm)		600	600	600	600	600	600
	D (mm)		400	500	400	400	400	500
Mounting plate	H1 (mm)		570	570	770	770	970	970
	W2 (mm)		550	550	550	550	550	550
Material thickness (mm)	Enclosure body		1,5	1,5	1,5	1,5	1,5	1,5
	Door		1,5	1,5	2	2	2	2
	Mounting plate		2,5	2,5	3 F*	3 F*	3 F*	3 F*
Number	Hinges		2	2	2	2	3	3
	Cam locks		2	2	2	2	–	–
	3-point locking system		–	–	–	–	+	+
	Bolts		4	4	4	4	4	4
Weight (kg)								
Code		Package	WME-O19-060604	WME-O19-060605	WME-O19-080604	WME-O19-080605	WME-O19-100604	WME-O19-100605
Supply includes:	Enclosure	1 pc	WME-O-060604	WME-O-060605	WME-O-080604	WME-O-080605	WME-O-100604	WME-O-100605
	19" fixed extrusions	1 set	ID-W-U12	ID-W-U12	ID-W-U17	ID-W-U17	ID-W-U21	ID-W-U21
Code—glazed door version		Package	WME-O19-G-060604	WME-O19-G-060605	WME-O19-G-080604	WME-O19-G-080605	WME-O19-G-100604	WME-O19-G-100605
Supply includes:	Enclosure	1 pc	WME-O-G-060604	WME-O-G-060605	WME-O-G-080604	WME-O-G-080605	WME-O-G-100604	WME-O-G-100605
	19" fixed extrusions	1 set	ID-W-U12	ID-W-U12	ID-W-U17	ID-W-U17	ID-W-U21	ID-W-U21
ACCESSORIES								
Pole-mounting brackets		1 set	ID-W-MP6	ID-W-MP6	ID-W-MP6	ID-W-MP6	ID-W-MP6	ID-W-MP6
Wall-mounting brackets		1 set	ID-W-WB	ID-W-WB	ID-W-WB	ID-W-WB	ID-W-WB	ID-W-WB
Rain canopy – polyester powder coated aluminum		1 pc	ID-W-R6040	ID-W-R6050	ID-W-R6040	ID-W-R6050	ID-W-R6040	ID-W-R6050
Plinth **	front and rear	1 set	ID-W-PF60	ID-W-PF60	ID-W-PF60	ID-W-PF60	ID-W-PF60	ID-W-PF60
	side parts	1 set	ID-W-PS40	ID-W-PS50	ID-W-PS40	ID-W-PS50	ID-W-PS40	ID-W-PS50
Rails for interior installation		1 set	ID-W-H6	ID-W-H6	ID-W-H8	ID-W-H8	ID-W-H10	ID-W-H10
Door-mounting rails		1 set	ID-W-VD6	ID-W-VD6	ID-W-VD6	ID-W-VD6	ID-W-VD6	ID-W-VD6

* 3 F—3mm mounting plate with 2 bent edges. ** Plinth steel version, height 100 mm, RAL 7046.



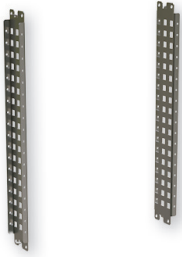
WME-O19-G-060604 + rain canopy ID-W-R6040



WME-O19-060604

ACCESSORIES

RAILS FOR INTERIOR INSTALLATION

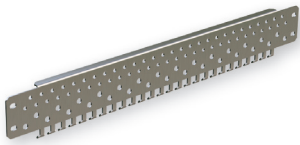


- Material: 2mm zinc-plated sheet steel with 25 mm perforation
- Rail width: 75 mm
- Mounting: onto interior rails, which are part of the enclosure
- Supply includes: 2 mounting rails and accessories

Code	For enclosure height (mm)	Package *
ID-W-H6	600	1 set
ID-W-H8	800	1 set
ID-W-H10	1000	1 set

* 1 set—2 pieces.

DOOR-MOUNTING RAILS



- Material: 2mm zinc-plated sheet steel
- Rail width: 61 mm (including door-mounting rails)
- Mounting: onto rails for interior installation, which are part of the enclosure door
- Supply includes: 2 pcs door-mounting rails and mounting accessories

Code	For enclosure width (mm)	Package *
ID-W-VD6	600	1 set

* 1 set—2 pieces.

SPARE MOUNTING PLATE



- Material: zinc-plated sheet steel
- Supply includes: mounting plate with marked raster 50 × 50 mm (securing materials in enclosure accessories)

Code	For sizes of enclosures H × W (mm)	Thickness of the material (mm)
ID-W-SP6060	600 × 600	2,5
ID-W-SP8060	800 × 600	3 F *
ID-W-SP1060	1000 × 600	3 F *

* 3 F—3mm mounting plate with 2 bent edges.

BRACKETS FOR ADJUSTING MOUNTING PLATE

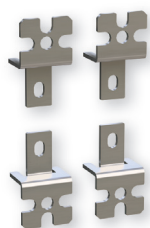


- Material: 2mm zinc-plated sheet steel
- Mounting: onto rails for interior installation, which are part of the enclosure
- Supply includes: 4 wall-mounting brackets and mounting accessories

Code	Package
ID-W-AMB	4 pcs

Only for enclosures with 4 bolts.

WALL-MOUNTING BRACKETS



- Material: 3mm stainless steel
- Load capacity: 100 kg
- Supply includes: 4 pcs brackets and mounting material to mount onto enclosure

Code	Package
ID-W-WB	4 pcs

LOCKS/LOCK INSERTS



ID-W-INSS



Double bit



Square



Triangular

Code	Type	Material	Package
ID-W-INSS	Spare rotary lock WME	–	1 set*
ID-W-INLK	T handle with a lock for WME, key 5333	chrome plated zamak	1 set**
ID-W-INLK1	Lock for WME, key 444	chrome plated zamak	1 set**
ID-W-INLK2	Lock for WME, unique key	chrome plated zamak	1 set**
ID-W-INLK3	Handle with lock for WME, key 5333	chrome plated zamak	1 set**
ID-W-IND3	3 mm "Double bit"	black zamak	1 pc
ID-W-INS6	6 mm square	black zamak	1 pc
ID-W-INS7	7 mm square	black zamak	1 pc
ID-W-INS8	8 mm square	black zamak	1 pc
ID-W-INT7	7 mm triangle	black zamak	1 pc
ID-W-INT8	8 mm triangle	black zamak	1 pc
ID-W-INT9	9 mm triangle	black zamak	1 pc
ID-W-INLKE1	Lockable closure VW 1	chrome plated zamak	1 set**

* Complete replacement rotary double bit lock kit 5 mm with double bar.

** Complete set of cam lock with double bar.

PLINTH



- Height: 100 mm
- Material: 2mm zinc-plated sheet steel
- Surface finish: epoxypolyester powder coating
- Possibility of installing two plinths on top of each other (max. 4pcs)
- Supply includes: Plinth and accessories (set ID-W-PFxx/ID-W-PSxx)

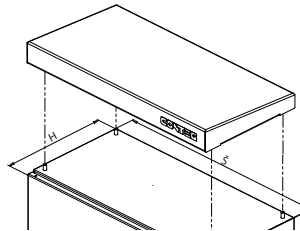
Code	For enclosure depth (mm)	Material	Color	Package
Plinth steel—side kit				
ID-W-PS40	400	steel	RAL 7046	1 set *
ID-W-PS50	500	steel	RAL 7035	1 set *

* 1 set contains 2 sides and mounting accessories.

Code	For enclosure width (mm)	Material	Color	Package
Plinth steel—front and rear kit				
ID-W-PF60	600	steel	RAL 7046	1 set **

** 1 set contains 1 pcs front and 1 pcs rear and mounting accessories.

RAIN CANOPY



- Material: 2mm aluminum sheet
- Surface finish: polyester powder coating
- Color: RAL 7035
- Mounting: directly into the enclosure roof, 4x M6 screws, the roof sloping is adjustable
- Holes for installation in the CONTEG Modification Center
- Supply includes: roof and mounting accessories

Code	For enclosure dimensions W × D (mm)
ID-W-R6040	600 × 400
ID-W-R6050	600 × 500

POLE-MOUNTING BRACKETS



- Material: 2mm stainless steel sheet
- Mounting: for poles that are 250 mm in diameter
- Load capacity: 200 kg
- Supply includes: Pole-mounting brackets mounting accessories (2 pcs profile rails, 2 pcs clamping straps(l=850 mm), 8 sets: screws M8×12, self-locking nuts and washers adhesion)

Code	For enclosure width (mm)
ID-W-MP6	600

DOOR STOP



- Material: 2mm zinc-plated sheet steel
- Application: for enclosures 500 mm in height and higher and 250 mm deep and deeper
- Supply includes: door stop and mounting accessories

Code	Package
ID-W-DS	1 pc

DOOR SWITCH



- Material—brackets: 2mm zinc-plated sheet steel
- Door switch: IP65, plastic, 1NO + 1NC, PG13,5, -25°C to +70°C
- Application: for enclosures 500 mm high and higher and 250 mm deep and deeper
- Supply includes: door switch and mounting accessories

Code	Package
ID-W-DC	1 pc

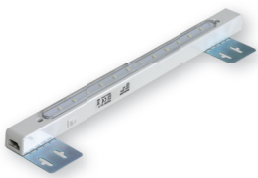
POCKET FOR DOCUMENTS



- Material: ABS
- Color: RAL 7035
- Dimensions: 234 × 241 × 31 mm (H × W × D)
- Mounting: self-adhesive tape
- Supply includes: pocket for documents including self-adhesive tape

Code	Package
ID-PO-A4	1 pc

LIGHTING UNIT



- Degree of protection: IP20
- Mounting: onto mounting plate, side of rails
- Technology LED, 12 illuminated spots
- Dimensions: 400 × 26 × 27 mm (W × H × D)
- Supply includes:
 - inter-connection cables
 - brackets for mounting plate for fitting the lighting unit near the top in various depths

Code	Description	Package
ID-W-L	3W, 230 W, 50 Hz	1 pc

DRAINAGE DEVICE



- Material: plastic according to UL94V-0, dark grey, waterproof with UV protection
- Degree of protection: IP67
- Sealing: NBR
- Dimensions: Ø 60 × 49,5 mm, 17,5 mm inside the enclosure
- Water flow rate: 200 ml/hod
- Mounting: vertically at the lowest point, thread M50x1.5 with nut (Cut-out diameter 50 mm)

Code	Package
ID-EO-DD	1 pc

PRESSURE COMPENSATOR



- Mounting: PG 29 thread with union-nut (cut-out diameter 37 mm)
- Mounting position: any position (installation other than vertical reduces the degree of protection to IP54)
- Material: plastic according to UL94 V-0, light grey RAL 7035
- Degree of protection: IP 55
- Dimensions: Ø 65,5 × 30,5 mm

Code	Package
ID-EO-PC	2 ks

CABLE GLANDS AND NUTS WITH PG/METRIC THREAD



- Material: Polyamide PA6, sealing CR (neoprene)
- Degree of protection: IP68
- Color: RAL 7035

Code	Description	Thread/size	cable Ø (mm)	Package
ORO-PG7N	Sealing grommet Pg7	Pg7	2,5 – 6,5	10 pcs
ORO-PG9N	Sealing grommet Pg9	Pg9	3 – 8	5 pcs
ORO-PG11N	Sealing grommet Pg11	Pg11	4 – 10	5 pcs
ORO-PG13N	Sealing grommet Pg13	Pg13	5,5 – 12	5 pcs
ORO-PG16N	Sealing grommet Pg16	Pg16	8,5 – 14	5 pcs
ORO-PG21N	Sealing grommet Pg21	Pg21	11 – 18	5 pcs
ORO-PG29N	Sealing grommet Pg29	Pg29	17 – 25	5 pcs
ORO-PG36N	Sealing grommet Pg36	Pg36	22 – 33	1 pc
ORO-PG42N	Sealing grommet Pg42	Pg42	28 – 38	1 pc
ORO-PG48N	Sealing grommet Pg48	Pg48	32 – 44	1 pc
ORO-ZPG7N	Plastic nut with flange Pg7	Pg7	–	10 pcs
ORO-ZPG9N	Plastic nut with flange Pg9	Pg9	–	5 pcs
ORO-ZPG11N	Plastic nut with flange Pg11	Pg11	–	5 pcs
ORO-ZPG13N	Plastic nut with flange Pg13	Pg13	–	5 pcs
ORO-ZPG16N	Plastic nut with flange Pg16	Pg16	–	5 pcs
ORO-ZPG21N	Plastic nut with flange Pg21	Pg21	–	5 pcs
ORO-ZPG29N	Plastic nut with flange Pg29	Pg29	–	5 pcs
ORO-ZPG36N	Plastic nut with flange Pg36	Pg36	–	1 pc
ORO-ZPG42N	Plastic nut with flange Pg42	Pg42	–	1 pc
ORO-ZPG48N	Plastic nut with flange Pg48	Pg48	–	1 pc
ORO-M12N	Sealing grommet M12×1,5	M12×1,5	2,5 – 6,5	10 pcs
ORO-M16N	Sealing grommet M16×1,5	M16×1,5	4,5 – 10	5 pcs
ORO-M20N	Sealing grommet M20×1,5	M20×1,5	7 – 13	5 pcs
ORO-M25N	Sealing grommet M25×1,5	M25×1,5	10 – 17	5 pcs
ORO-M32N	Sealing grommet M32×1,5	M32×1,5	17 – 25	5 pcs
ORO-ZM12N	Plastic nut with flange M12×1,5	M12×1,5	–	10 pcs
ORO-ZM16N	Plastic nut with flange M16×1,5	M16×1,5	–	5 pcs
ORO-ZM20N	Plastic nut with flange M20×1,5	M20×1,5	–	5 pcs
ORO-ZM25N	Plastic nut with flange M25×1,5	M25×1,5	–	5 pcs
ORO-ZM32N	Plastic nut with flange M32×1,5	M32×1,5	–	5 pcs

EARTHING



- Supply includes:
 - ID-W-EK: complete earthing kit for whole enclosures
 - ID-W-EW68/EW88/EW8816: cable length 300 mm with crimped lugs

Code	Description	Package
ID-W-EK	Earthing kit WME	1 set *
ID-W-EW68	Grounding wires M6, M8 (door, enclosure), cross-section 10 mm ²	10 ks
ID-W-EW88	Grounding wires M8, M8 (enclosure, mounting plate), cross-section 10 mm ²	10 ks
ID-W-EW8816	Grounding wires M8, M8 (enclosure, mounting plate), cross-section 16 mm ²	10 ks

* Set contains: nuts, screws for earthing door(s), enclosure and mounting plate.

GLAND PLATE WITH CABLE-ENTRY PLATE



- Material: polyamide/elastomer, UL-94 Vo, self-extinguishing
- Degree of protection: IP64
- Mounting: in the opening at the bottom of enclosure instead of full metal gland plate
- Supply includes: 1 pc gland plate
- Holes for installation in the CONTEG Modification Center

Code	Sizes W x D (mm)	Cables	Package
ID-W-ME24/19	142 x 44	12x max Ø 6,5 mm; 7x Ø 2,1 mm	1 pc
ID-W-ME24/48	142 x 44	48x max Ø 6,5 mm	1 pc

GLAND PLATE WITH CABLE-ENTRY FRAME AND CABLE INSERTS



- Material:
 - Bottom: varnished sheet steel
 - Cable inserts: elastomer, UL-94 Vo, self-extinguishing
 - Cable-entry frame: polyamide, UL-94 Vo, self-extinguishing
- Frame size: 120 x 58 mm, 8 positions for cable inserts ID-W-CExx
- Degree of protection: IP54
- Amount of cables: see cable insert ID-W-CExx
- Mounting: in the opening at the bottom of enclosure instead of full metal gland plate
- Supply includes: gland plate with cable-entry frame with holes

Gland plate with cable-entry frame				
Code	Gland plate size	Frame size W x D (mm)	Amount of positions ID-W-CExx	Package
ID-W-CG02B	B	120 x 58	8	1 pc
ID-W-CG02C	C	120 x 58	8	1 pc
ID-W-CG02D	D	120 x 58	8	1 pc
ID-W-CG02E	E	120 x 58	8	1 pc
ID-W-CG02F	F	120 x 58	8	1 pc

Cable inserts		
Code	Ø (mm)	Package
ID-W-CEP	cable blind ID-W-CG02x	1 pc
ID-W-CE3	3-4	1 pc
ID-W-CE4	4-5	1 pc
ID-W-CE5	5-6	1 pc
ID-W-CE6	6-7	1 pc
ID-W-CE7	7-8	1 pc
ID-W-CE8	8-9	1 pc
ID-W-CE9	9-10	1 pc
ID-W-CE10	10-11	1 pc
ID-W-CE11	11-12	1 pc
ID-W-CE12	12-13	1 pc
ID-W-CE13	13-14	1 pc
ID-W-CE14	14-15	1 pc
ID-W-CE2/3	2x3	1 pc
ID-W-CE2/4	2x4	1 pc
ID-W-CE2/5	2x5	1 pc
ID-W-CE2/5,5	2x5,5	1 pc
ID-W-CE2/6	2x6	1 pc
ID-W-CE2/6,5	2x6,5	1 pc
ID-W-CE2/7	2x7	1 pc
ID-W-CE4/3	4x3	1 pc
ID-W-CE4/4	4x4	1 pc
ID-W-CE4/4,5	4x4,5	1 pc
ID-W-CE4/5	4x5	1 pc
ID-W-CE4/5,5	4x5,5	1 pc
ID-W-CE4/6	4x6	1 pc

CLIMATE CONTROL SOLUTIONS

FILTER FANS



MAIN ADVANTAGES

- Quick assembly without screws and tools into a square cut-out, easy to mount with highly elastic clips
- Easy filter insert replacement from the outside without tools
- Possible to change airflow direction
- Airflow up to 800 m³/h
- Can be mounted in an enclosure with a sheet thickness of 1-2.5 mm
- IP 54 standard degree of protection
- Side and top ventilator placement
- Operating temperature range -10 °C up to +70 °C
- Polyurethane foam sealing around the whole perimeter
- Resistance against UV radiation
- Holes for installation in the CONTEG Modification Center

DESCRIPTION

- Plastic parts made of ABS/PC mix, all parts are self-extinguishing according to UL 94V-0
- Standard color RAL 7035 (different color on request)
- Filter inserts made of synthetic fibres of class G3 according to EN

779 and class G4 according to EN 779 and UL 900 class 2 self-extinguishing in class F1 according to DIN 53 438

- Filter inserts are cleaned by washing, compressed air and banging

- Encapsulated fan ball bearings
- IP54 standard degree of protection EN 60529 and NEMA 12 according to UL 50
- IP55 settable (according to EN 60529)

- IP56 when using protective cover against splashing water
- EMC version available on request

Fans

Code	Airflow	Dimensions H × W × D	Voltage **	Frequency	Outlet filter grid	Cut-out dimensions	Degree of protection
ID-EF-01-4	12/15 m ³ /h	106,5 × 106,5 × 59,9 mm	230 VAC	50/60 Hz	ID-EF-01	92 × 92 mm	IP54
ID-EF-01-1	15 m ³ /h	106,5 × 106,5 × 59,9 mm	24 VDC	–	ID-EF-01	92 × 92 mm	IP54
ID-EF-04-4	45/50 m ³ /h	150 × 150 × 65,5 mm	230 VAC	50/60 Hz	ID-EF-03	125 × 125 mm	IP54
ID-EF-04-1	47 m ³ /h	150 × 150 × 65,5 mm	24 VDC	–	ID-EF-03	125 × 125 mm	IP54
ID-EF-10-4	100/110 m ³ /h	203,9 × 203,9 × 87,5 mm	230 VAC	50/60 Hz	ID-EF-05	177 × 177 mm	IP54
ID-EF-10-1	100 m ³ /h	203,9 × 203,9 × 87,5 mm	24 VDC	–	ID-EF-05	177 × 177 mm	IP54
ID-EF-23-4	230/270 m ³ /h	250 × 250 × 115,3 mm	230 VAC	50/60 Hz	ID-EF-07	223 × 223 mm	IP54
ID-EF-22-1	225 m ³ /h	250 × 250 × 115,3 mm	24 VDC	–	ID-EF-07	223 × 223 mm	IP54
ID-EF-52-4	520/580 m ³ /h	325 × 325 × 150,7 mm	230 VAC	50/60 Hz	ID-EF-09	291 × 291 mm	IP54
ID-EF-71-4	710/800 m ³ /h	325 × 325 × 149 mm	230 VAC	50/60 Hz	ID-EF-09	291 × 291 mm	IP54
ID-EFT-42-4 *	420/490 m ³ /h	324 × 324 × 94 mm	230 VAC	50/60 Hz	ID-EF-09	fan 175 × 175 mm/grid 291 × 291 mm	IP54
ID-EO-TC	Thermostat for cooling	55 × 33 × 43 mm	250 VAC/10 A	–	–	–	IP20

* Top version.

** Other input voltage options available upon request.

Note: the depth of the fan can extend into the 19" plane, it is necessary to verify the correct location.

SAFETY WARNING SIGNS

DANGER: ELECTRIC SHOCK RISK



**DANGER:
ELECTRIC
SHOCK RISK**



**DANGER:
ELECTRIC
SHOCK RISK**

- Material: Oracal 640 self-adhesive foil, easily attachable to smooth surfaces
- Print: UV LED technology

Code	Height (mm)	Width (mm)	Package *
ID-OS-H1007	105	74	1 set
ID-OS-H0705	74	52	1 set
ID-OS-H0309	30	90	1 set

* 1 set—5 pcs.

DO NOT EXTINGUISH WITH WATER OR FOAM



**DO NOT
EXTINGUISH WITH
WATER OR FOAM**



**DO NOT
EXTINGUISH WITH
WATER OR FOAM**

- Material: Oracal 640 self-adhesive foil, easily attachable to smooth surfaces
- Print: UV LED technology

Code	Height (mm)	Width (mm)	Package *
ID-OS-F1007	105	74	1 set
ID-OS-F0705	74	52	1 set
ID-OS-F0309	30	90	1 set

* 1 set—5 pcs.

SWITCH OFF IN CASE OF EMERGENCY



**SWITCH OFF
IN CASE
OF EMERGENCY**



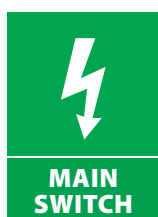
**SWITCH OFF
IN CASE
OF EMERGENCY**

- Material: Oracal 640 self-adhesive foil, easily attachable to smooth surfaces
- Print: UV LED technology

Code	Height (mm)	Width (mm)	Package *
ID-OS-G1007	105	74	1 set
ID-OS-G0705	74	52	1 set
ID-OS-G0309	30	90	1 set

* 1 set—5 pcs.

MAIN SWITCH



**MAIN
SWITCH**



**MAIN
SWITCH**

- Material: Oracal 640 self-adhesive foil, easily attachable to smooth surfaces
- Print: UV LED technology

Code	Height (mm)	Width (mm)	Package *
ID-OS-E1007	105	74	1 set
ID-OS-E0705	74	52	1 set
ID-OS-E0309	30	90	1 set

* 1 set—5 pcs.

MULTIPLE MESSAGES—DANGER ELECTRIC SHOCK RISK; DO NOT EXTINGUISH WITH WATER OR FOAM



**DANGER:
ELECTRIC
SHOCK RISK**



**DO NOT
EXTINGUISH WITH
WATER OR FOAM**

- Material: Oracal 640 self-adhesive foil, easily attachable to smooth surfaces
- Print: UV LED technology

Code	Height (mm)	Width (mm)	Package *
ID-OS-B0710	74	105	1 set

* 1 set—5 pcs.

MULTIPLE MESSAGES—MAIN SWITCH, SWITCH OFF IN CASE OF EMERGENCY



**MAIN
SWITCH**



**SWITCH OFF
IN CASE
OF EMERGENCY**

- Material: Oracal 640 self-adhesive foil, easily attachable to smooth surfaces
- Print: UV LED technology

Code	Height (mm)	Width (mm)	Package *
ID-OS-C0710	74	105	1 set

* 1 set—5 pcs.

MULTIPLE MESSAGES (4)



**DANGER:
ELECTRIC
SHOCK RISK**



**DO NOT
EXTINGUISH WITH
WATER OR FOAM**



**MAIN
SWITCH**



**SWITCH OFF
IN CASE
OF EMERGENCY**

- Material: Oracal 640 self-adhesive foil, easily attachable to smooth surfaces
- Print: UV LED technology

Code	Height (mm)	Width (mm)	Package *
ID-OS-D1410	148	105	1 set

ID-OS-D1007	105	74	1 set
-------------	-----	----	-------

* 1 set—5 pcs.

DANGER



- Material: Oracal 640 self-adhesive foil, easily attachable to smooth surfaces
- Print: UV LED technology

Code	Height (mm)	Width (mm)	Package *
ID-OS-A0809	80	90	1 set

ID-OS-A0606	60	67,5	1 set
-------------	----	------	-------

* 1 set—5 pcs.



Labelling enclosures, your logo and other sticker dimensions available on request.



CONTEG, spol. s r.o.

Headquarters:

Na Vitezne plani 1719/4
140 00 Prague 4
Czech Republic

Production plant:

K Silu 2179
393 01 Pelhrimov
Czech Republic

Tel.: +420 565 300 362

conteg@conteg.com

www.conteg.com

CONTEG