



**DATASHEET**  
Free-Standing  
Outdoor Cabinets  
outTEG OMR

# OUTDOOR CABINETS

➤ The advantage of double-walled aluminum cabinets is that it maintains a 10 % lower internal temperature than a plastic or single-walled solution. In many applications, our customers do not have to invest in air-conditioning units at all, or they can save them by lowering the power of these devices and consequently the energy consumed for their operation.

You can order cabinets from our standard ranges to ensure quick delivery. If you have special requirements, you can design these cabinets according to your specifications. You can use our web configurator or contact our experienced sales representatives.

|                              | outTEG OMR   | outTEG OMR LITE  | FSM-O   | WME-O  |
|------------------------------|--|--|---|--|
|                              |  |  |  |  |
| <b>Material</b>              | Door, rear panel, roof—aluminum<br>Frame, plinth—stainless steel                   | Aluminum   | Stainless steel   | Stainless steel  |
| <b>Construction</b>          | Double-walled  | Double-walled  | Single-walled   | Single-walled  |
| <b>IP rating</b>             | IP66   | IP65   | IP55  | IP66   |
| <b>Mechanical protection</b> | IK10   | IK10   | IK10  | IK10   |
| <b>Color</b>                 | RAL 7035 (light grey) for body<br>RAL 7046 (grey) for roof and plinth              | RAL 7035 (light grey)  | RAL 7035 (light grey)   | RAL 7035 (light grey)  |
| <b>Coating</b>               | Polyester powder coating<br>with UV protection                                     | Polyester powder coating<br>with UV protection                                     | Polyester powder coating<br>with UV protection                                      | Polyester powder coating<br>with UV protection                                       |

# outTEG OMR—

## FREE-STANDING OUTDOOR CABINETS





OMR-DN-106506-R

➤ The outTEG OMR free-standing outdoor cabinets presents an ideal solution for projects with high demands on safety of installed equipment and on stable in-rack climate. Double-walled case design safeguards the installed components from all-weather as well as from vandalism thanks to the cabinet's compact structure which prevents access to the installed components from the outside. For extreme weather conditions, the side panel variants can be modified to allow the installation of fans or air-conditioning units. Resistance to weather is ensured mainly by the AlMg3 alloy used for the cabinet case and the applied finish of polyester powder coating with UV protection. Additional protection is provided by the stainless steel frame and the plinth.

### MAIN ADVANTAGES

- Features integrated roof and plinth
- Welded stainless steel cabinet frame
- All removable parts are made of aluminum
- Compact design—no point of access for lever-type tools
- Ready for crane transport

COLOR:  RAL 7035  RAL 7046



### DESCRIPTION

#### Material

- Door, rear/side panels, roof—2 mm AlMg3
- Frame, plinth—2 mm stainless steel 1.4016 (AISI 403)

#### Coating

- Polyester powder coating with UV protection

#### Color

- Body color—RAL 7035
- Roof and plinth color—RAL 7046

#### IP rating

- IP66 (degree of IP rating can be reduced after mounting some accessories)

#### Seismic protection

- Seismic approvals according to Bellcore GR-63-CORE Zone 3 (Zone 4 upon request)

#### Package includes

- Double-walled outdoor cabinet, fully mounted

- Ventilation—natural air flow between inner and outer walls
- Removable rear panel
- Removable roof
- Front door with multi-point locking system, key combination 333, door stop. Easily configured to a right or left hand door mounting
- 100 mm plinth
- Vertical mounting internal rails with 25 mm perforations

- Removable gland plate
- Set-up for eye-bolts
- Side panels need to be ordered separately (see page 11)

| outTEG OMR—FREE-STANDING OUTDOOR CABINETS, DOUBLE-WALLED, SINGLE DOOR, HEIGHT 600–1 200 mm |         |                 |                 |                 |                 |                 |                 |
|--|---------|-----------------|-----------------|-----------------|-----------------|-----------------|-----------------|
| H (U)  | Package | 12 U            | 16 U            | 21U             | 21U             | 25 U            | 25 U            |
| H (mm)   |         | 600             | 800             | 1000            | 1000            | 1200            | 1200            |
| W (mm)   |         | 650             | 650             | 650             | 800             | 800             | 1000            |
| D (mm)   |         | 600             | 600             | 600             | 500             | 800             | 700             |
| Weight (kg)  |         | 63              | 69              | 81              | 82              | 115             | 119             |
| Code   | 1 pc    | OMR-DN-066506-R | OMR-DN-086506-R | OMR-DN-106506-R | OMR-DN-100805-R | OMR-DN-120808-R | OMR-DN-121007-R |
| ACCESSORIES  |         |                 |                 |                 |                 |                 |                 |
| Side panel **  | 1 pc    | OMR-DN-S0606-1  | OMR-DN-S0806-1  | OMR-DN-S1006-1  | OMR-DN-S1005-1  | OMR-DN-S1208-1  | OMR-DN-S1207-1  |
| Mounting plate, full installation  | 1 pc    | IDO-MM-F665     | IDO-MM-F865     | IDO-MM-F1065    | IDO-MM-F108     | IDO-MM-F128     | IDO-MM-F1210    |
| 19" and 21" vertical rails   | 1 pair  | IDO-MR-V6       | IDO-MR-V8       | IDO-MR-V10      | IDO-MR-V10      | IDO-MR-V12      | IDO-MR-V12      |
| ETSI vertical rails  | 1 pair  | IDO-MR-E6       | IDO-MR-E8       | IDO-MR-E10      | IDO-MR-E10      | IDO-MR-E12      | IDO-MR-E12      |
| N profile for vertical rails   | 1 pair  | IDO-MR-N6 *     | IDO-MR-N6 *     | IDO-MR-N6 *     | IDO-MR-N5 *     | IDO-MR-N8 *     | –               |
| L profile for vertical rails   | 1 set   | –               | –               | –               | IDO-MR-L5       | IDO-MR-L8       | IDO-MR-L7       |
| Horizontal rail  | 1 pair  | see page 17     |                 |                 |                 |                 |                 |
| Baying kit   | 1 set   | OMR-DN-K0606    | OMR-DN-K0806    | OMR-DN-K1006    | OMR-DN-K1005    | OMR-DN-K1208    | OMR-DN-K1207    |
| Fixing frame for concrete base   | 1 pc    | IDO-MF-P6506    | IDO-MF-P6506    | IDO-MF-P6506    | IDO-MF-P0805    | IDO-MF-P0808    | IDO-MF-P1007    |

\* You have to order 2 sets, for 1 400 a 1 600 mm height must be ordered 3 sets, for 2 000 height must be ordered 4 sets. For 800 mm wide cabinets with IDO-MR-Nxx, an IDO-MR-N-B holder (2 sets for 1 set of IDO-MR-Nxx) must be ordered as well. \*\* You have to order 2 pcs.

| outTEG OMR—FREE-STANDING OUTDOOR CABINETS, DOUBLE-WALLED, SINGLE DOOR, HEIGHT 1 400–1 600 mm |         |                 |                 |                 |                 |                 |      |
|--|---------|-----------------|-----------------|-----------------|-----------------|-----------------|------|
| H (U)  | Package | 30 U            | 34 U            | 34 U            | 34 U            | 34 U            | 34 U |
| H (mm)   |         | 1400            | 1600            | 1600            | 1600            | 1600            | 1600 |
| W (mm)   |         | 650             | 650             | 800             | 800             | 1000            | 1000 |
| D (mm)   |         | 600             | 400             | 700             | 1000            | 800             | 800  |
| Weight (kg)  |         | 91              | 97              | 107             | 124             | 169             | 169  |
| Code   | 1 pc    | OMR-DN-146506-R | OMR-DN-166504-R | OMR-DN-160807-R | OMR-DN-160810-R | OMR-DN-161008-R |      |
| ACCESSORIES  |         |                 |                 |                 |                 |                 |      |
| Side panel **  | 1 set   | OMR-DN-S1406-1  | OMR-DN-S1604-1  | OMR-DN-S1607-1  | OMR-DN-S1610-1  | OMR-DN-S1608-1  |      |
| Mounting plate, full installation  | 1 pc    | IDO-MM-F1465    | IDO-MM-F1665    | IDO-MM-F168     | IDO-MM-F168     | IDO-MM-F1610    |      |
| 19" and 21" vertical rails   | 1 pair  | IDO-MR-V14      | IDO-MR-V16      | IDO-MR-V16      | IDO-MR-V16      | IDO-MR-V16      |      |
| ETSI vertical rails  | 1 pair  | IDO-MR-E14      | IDO-MR-E16      | IDO-MR-E16      | IDO-MR-E16      | IDO-MR-E16      |      |
| N profile for vertical rails   | 1 pair  | IDO-MR-N6 *     | IDO-MR-N4 *     | IDO-MR-N7 *     | IDO-MR-N10 *    | –               |      |
| L profile for vertical rails   | 1 set   | –               | –               | IDO-MR-L7       | IDO-MR-L10      | IDO-MR-L8       |      |
| Horizontal rail  | 1 pair  | see page 17     |                 |                 |                 |                 |      |
| Baying kit   | 1 set   | OMR-DN-K1406    | OMR-DN-K1604    | OMR-DN-K1607    | OMR-DN-K1610    | OMR-DN-K1608    |      |
| Fixing frame for concrete base   | 1 pc    | IDO-MF-P6506    | IDO-MF-P6504    | IDO-MF-P0807    | IDO-MF-P0810    | IDO-MF-P1008    |      |

\* You have to order 2 sets, for 1 400 a 1 600 mm height must be ordered 3 sets, for 2 000 height must be ordered 4 sets. For 800 mm wide cabinets with IDO-MR-Nxx, an IDO-MR-N-B holder (2 sets for 1 set of IDO-MR-Nxx) must be ordered as well. \*\* You have to order 2 pcs.

**outTEG OMR—FREE-STANDING OUTDOOR CABINETS, DOUBLE-WALLED, SINGLE DOOR, HEIGHT 2 000 mm**

|                    |                |                        |                        |                        |                        |                        |                        |
|--------------------|----------------|------------------------|------------------------|------------------------|------------------------|------------------------|------------------------|
| <b>H (U)</b>       | <b>Package</b> | 42 U                   | 42 U                   | 42 U                   | 42 U                   | 42 U                   | 42 U                   |
| <b>H (mm)</b>      |                | 2 000                  | 2 000                  | 2 000                  | 2 000                  | 2 000                  | 2 000                  |
| <b>W (mm)</b>      |                | 650                    | 800                    | 800                    | 800                    | 1 000                  | 1 000                  |
| <b>D (mm)</b>      |                | 600                    | 600                    | 800                    | 1 000                  | 600                    | 800                    |
| <b>Weight (kg)</b> |                |                        |                        |                        |                        |                        |                        |
| <b>Code</b>        | <b>1 pc</b>    | <b>OMR-DN-206506-R</b> | <b>OMR-DN-200806-R</b> | <b>OMR-DN-200808-R</b> | <b>OMR-DN-200810-R</b> | <b>OMR-DN-201006-R</b> | <b>OMR-DN-201008-R</b> |

**ACCESSORIES**

|  |               |                |                |                |                |                |                |
|--|---------------|----------------|----------------|----------------|----------------|----------------|----------------|
| <b>Side panel **</b>                     | <b>1 set</b>  | OMR-DN-S2006-1 | OMR-DN-S2006-1 | OMR-DN-S2008-1 | OMR-DN-S2010-1 | OMR-DN-S2006-1 | OMR-DN-S2008-1 |
| <b>Mounting plate, full installation</b> | <b>1 pc</b>   | IDO-MM-F2065   | IDO-MM-F208    | IDO-MM-F208    | OMR-DN-F208    | IDO-MM-F2010   | IDO-MM-F2010   |
| <b>19" and 21" vertical rails</b>        | <b>1 pair</b> | IDO-MR-V20     | IDO-MR-V20     | IDO-MR-V20     | IDO-MR-V20     | IDO-MR-V20     | IDO-MR-V20     |
| <b>ETSI vertical rails</b>               | <b>1 pair</b> | IDO-MR-E20     | IDO-MR-E20     | IDO-MR-E20     | IDO-MR-E20     | IDO-MR-E20     | IDO-MR-E20     |
| <b>N profile for vertical rails</b>      | <b>1 pair</b> | IDO-MR-N6 *    | IDO-MR-N6 *    | IDO-MR-N8 *    | IDO-MR-N10*    | –              | –              |
| <b>L profile for vertical rails</b>      | <b>1 set</b>  |                | IDO-MR-L6      | IDO-MR-L8      | IDO-MR-L10     | IDO-MR-L6      | IDO-MR-L8      |
| <b>Horizontal rail</b>                   | <b>1 pair</b> | see page 17    |                |                |                |                |                |
| <b>Baying kit</b>                        | <b>1 set</b>  | OMR-DN-K2006   | OMR-DN-K2006   | OMR-DN-K2008   | OMR-DN-K2010   | OMR-DN-K2006   | OMR-DN-K2008   |
| <b>Fixing frame for concrete base</b>    | <b>1 pc</b>   | IDO-MR-P6506   | IDO-MR-P0806   | IDO-MR-P0808   | IDO-MR-P0810   | IDO-MR-P1006   | IDO-MR-P1008   |

\* You have to order 2 sets, for 1 400 a 1 600 mm height must be ordered 3 sets, for 2 000 height must be ordered 4 sets. For 800 mm wide cabinets with IDO-MR-Nxx, an IDO-MR-N-B holder (2 sets for 1 set of IDO-MR-Nxx) must be ordered as well. \*\* You have to order 2 pcs.

## SIDE PANELS—plain panel and ready for AC units installation



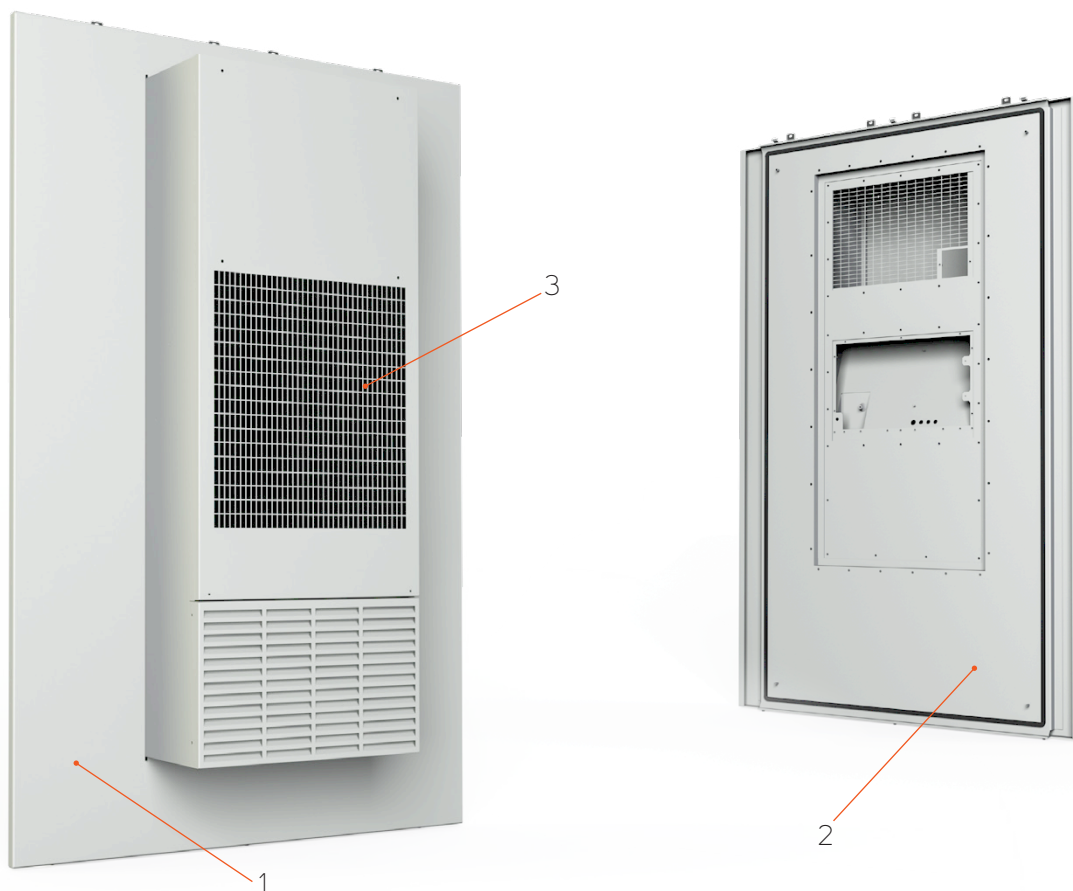
- Application: for assembling with outdoor cabinets OMR-DN-xxxxxx-R
- Double-walled construction
- Material: 2 mm AlMg3
- Color: RAL 7035
- OMR-DN-Sxxxx-1 plain side panel, for cabinets without climate solution you need 2 pcs, IP66

- OMR-DCMI-Sxxxx and OMR-DCME-Sxxxx plus cutouts in CONTEG Modification Center are ready for installation of cooling unit, IP56
- For complete solution with cooling unit AC-WMO you still have to order 1 pc of OMR-DN-Sxxxx-1
- For more information about cooling units, please visit page 23
- Package includes: assembly parts, variants of side panels

| Plain side panel | Side panel, internal part, ready for modifications* | Side panel, external part, ready for modifications* | Cabinet dimensions H × D (mm) | Package |
|------------------|---|---|-------------------------------|---------|
| OMR-DN-S0606-1   | OMR-DCMI-S0606                                      | OMR-DCME-S0606                                      | 600 × 600                     | 1 pc    |
| OMR-DN-S0806-1   | OMR-DCMI-S0806                                      | OMR-DCME-S0806                                      | 800 × 600                     | 1 pc    |
| OMR-DN-S1005-1   | OMR-DCMI-S1005                                      | OMR-DCME-S1005                                      | 1000 × 500                    | 1 pc    |
| OMR-DN-S1006-1   | OMR-DCMI-S1006                                      | OMR-DCME-S1006                                      | 1000 × 600                    | 1 pc    |
| OMR-DN-S1207-1   | OMR-DCMI-S1207                                      | OMR-DCME-S1207                                      | 1200 × 700                    | 1 pc    |
| OMR-DN-S1208-1   | OMR-DCMI-S1208                                      | OMR-DCME-S1208                                      | 1200 × 800                    | 1 pc    |
| OMR-DN-S1406-1   | OMR-DCMI-S1406                                      | OMR-DCME-S1406                                      | 1400 × 600                    | 1 pc    |
| OMR-DN-S1604-1   | OMR-DCMI-S1604                                      | OMR-DCME-S1604                                      | 1600 × 400                    | 1 pc    |
| OMR-DN-S1607-1   | OMR-DCMI-S1607                                      | OMR-DCME-S1607                                      | 1600 × 700                    | 1 pc    |
| OMR-DN-S1608-1   | OMR-DCMI-S1608                                      | OMR-DCME-S1608                                      | 1600 × 800                    | 1 pc    |
| OMR-DN-S1610-1   | OMR-DCMI-S1610                                      | OMR-DCME-S1610                                      | 1600 × 1000                   | 1 pc    |
| OMR-DN-S2006-1   | OMR-DCMI-S2006                                      | OMR-DCME-S2006                                      | 2000 × 600                    | 1 pc    |
| OMR-DN-S2008-1   | OMR-DCMI-S2008                                      | OMR-DCME-S2008                                      | 2000 × 800                    | 1 pc    |
| OMR-DN-S2010-1   | OMR-DCME-S2010                                      | OMR-DCME-S2010                                      | 2000 × 1000                   | 1 pc    |

\* Needs to be ordered together as a set.

## SIDE PANELS—with AC unit



|   | Code           | Description  | Page |
|---|----------------|--|------|
| 1 | OMR-DCME-Sxxxx | Side panel, external part, ready for modifications | 10   |
| 2 | OMR-DCMI-Sxxxx | Side panel, internal part, ready for modifications | 10   |
| 3 | AC-WMO-xx-xxxx | Outdoor cooling unit                               | 22   |

## SIDE PANELS—with forced ventilation



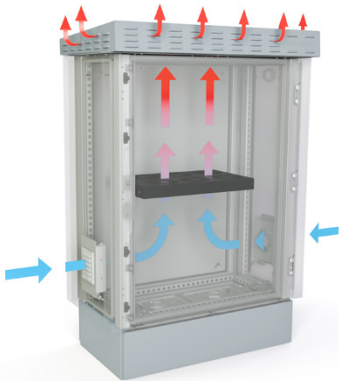
- Application: for assembling with cabinets OMR-DN-xxxxxx-R
- Double-walled construction
- Material: 2 mm AlMg3
- Color: RAL 7035 (light grey, with UV protection for outdoor use)
- OMR-DV-Sxxxx assembled side panels (pair) with forced ventilation 180 m<sup>3</sup>/h, 230 ACV (one side with filter fan and thermostat for cooling, and second one with outlet grid), IP55
- Package includes: assembly parts, variants of side panels

## PERFORATED ROOF



- Application: assembled with OMR-DN-xxxxxx-R cabinets
- Material: 2 mm AlMg3
- Color: RAL 7046 (dark grey, with UV protection for outdoor use)
- Package includes: assembly parts

Forced ventilation: perforated roof + ventilation units + modification cover with outlet grid



Ventilation with 19" units + modification cover with outlet grid



| Side panels with filter fan and outlet grid | Outdoor cabinet dimensions H × D (mm) | Package * |
|---|---------------------------------------|-----------|
| OMR-DV-S0606                                | 600 × 600                             | 1 set     |
| OMR-DV-S0806                                | 800 × 600                             | 1 set     |
| OMR-DV-S1005                                | 1000 × 500                            | 1 set     |
| OMR-DV-S1006                                | 1000 × 600                            | 1 set     |
| OMR-DV-S1207                                | 1200 × 700                            | 1 set     |
| OMR-DV-S1208                                | 1200 × 800                            | 1 set     |
| OMR-DV-S1406                                | 1400 × 600                            | 1 set     |
| OMR-DV-S1604                                | 1600 × 400                            | 1 set     |
| OMR-DV-S1607                                | 1600 × 700                            | 1 set     |
| OMR-DV-S1608                                | 1600 × 800                            | 1 set     |
| OMR-DV-S1610                                | 1600 × 1000                           | 1 set     |
| OMR-DV-S2006                                | 2000 × 600                            | 1 set     |
| OMR-DV-S2008                                | 2000 × 800                            | 1 set     |
| OMR-DV-S2010                                | 2000 × 1000                           | 1 set     |

\* 1 set—2 pcs.

| PERFORATED ROOF |   |         |
|-----------------|---|---------|
| Code            | For outdoor cabinet dimensions W × D (mm) | Package |
| OMR-DV-R6504    | 650 × 400                                 | 1 set   |
| OMR-DV-R6506    | 650 × 600                                 | 1 set   |
| OMR-DV-R0805    | 800 × 500                                 | 1 set   |
| OMR-DV-R0806    | 800 × 600                                 | 1 set   |
| OMR-DV-R0807    | 800 × 700                                 | 1 set   |
| OMR-DV-R0808    | 800 × 800                                 | 1 set   |
| OMR-DV-R0810    | 800 × 1000                                | 1 set   |
| OMR-DV-R1007    | 1000 × 700                                | 1 set   |
| OMR-DV-R1008    | 1000 × 800                                | 1 set   |

| PERFORATED ROOF WITH TOP FILTER FAN 540 m <sup>3</sup> /h |   |         |
|---|---|---------|
| Code  | For outdoor cabinet dimensions W × D (mm) | Package |
| OMR-DV-T6504  | 650 × 400                                 | 1 set   |
| OMR-DV-T6506  | 650 × 600                                 | 1 set   |
| OMR-DV-T0805  | 800 × 500                                 | 1 set   |
| OMR-DV-T0806  | 800 × 600                                 | 1 set   |
| OMR-DV-T0807  | 800 × 700                                 | 1 set   |
| OMR-DV-T0808  | 800 × 800                                 | 1 set   |
| OMR-DV-T0810  | 800 × 1000                                | 1 set   |
| OMR-DV-T1007  | 1000 × 700                                | 1 set   |
| OMR-DV-T1008  | 1000 × 800                                | 1 set   |

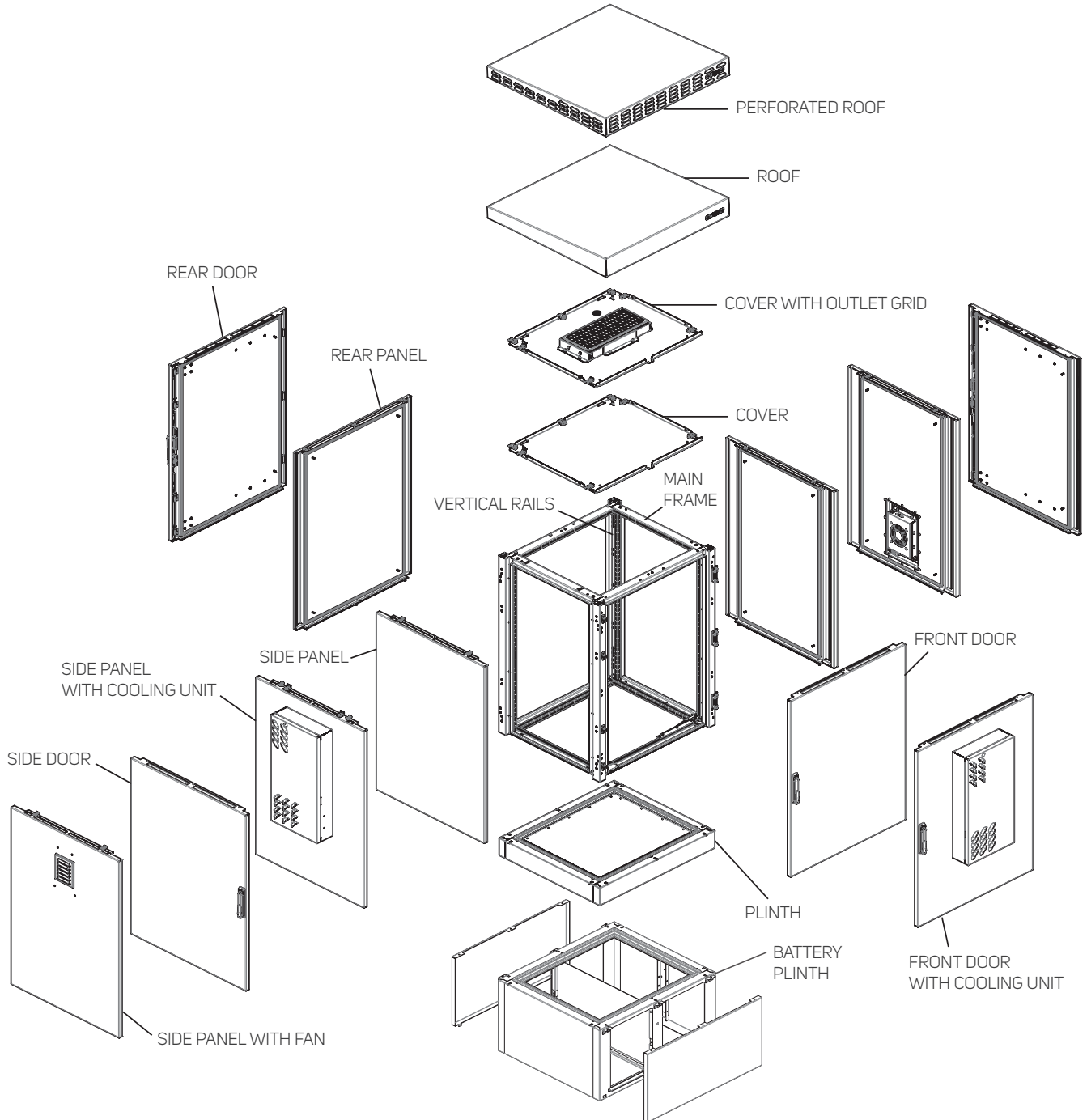
| SIDE PANELS WITH OUTLET GRID—FOR VENTILATION IN ROOF |   |           |
|--|---|-----------|
| Code   | For outdoor cabinet dimensions H × D (mm) | Package * |
| OMR-DV-S1005-54                                      | 1000 × 500                                | 1 set     |
| OMR-DV-S1207-54                                      | 1200 × 700                                | 1 set     |
| OMR-DV-S1208-54                                      | 1200 × 800                                | 1 set     |
| OMR-DV-S1406-54                                      | 1400 × 600                                | 1 set     |
| OMR-DV-S1604-54                                      | 1600 × 400                                | 1 set     |
| OMR-DV-S1607-54                                      | 1600 × 700                                | 1 set     |
| OMR-DV-S1608-54                                      | 1600 × 800                                | 1 set     |
| OMR-DV-S1610-54                                      | 1600 × 1000                               | 1 set     |
| OMR-DV-S2006-54                                      | 2000 × 600                                | 1 set     |
| OMR-DV-S2008-54                                      | 2000 × 800                                | 1 set     |
| OMR-DV-S2010-54                                      | 2000 × 1000                               | 1 set     |

\* 1 set—2 pcs.

# CUSTOMIZED SOLUTIONS FOR outTEG OMR

➤ If you don't choose from our basic series, you can design your own outdoor cabinet according to specific requirements.

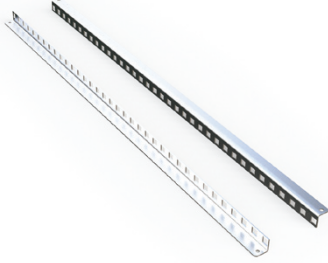
Use our web configurator <https://partner.conteq.com/en/outteg/step1> or contact with our experienced sales representatives, who will gladly help you.





# INTERIOR INSTALLATION

## 19", 21" AND ETSI VERTICAL RAILS

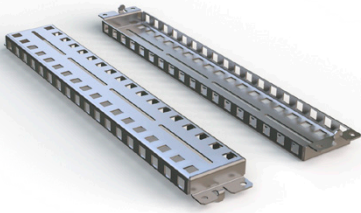


- Application: in combination with N or L profiles
- Material: 2 mm galvanized sheet steel
- Installation: on IDO-MR-Nxx/IDO-MR-Lxx rails
- Package includes: assembly parts

| Code (19", 21") | Code (ETSI) | For cabinet height mm (in U) | Package * |
|-----------------|-------------|------------------------------|-----------|
| IDO-MR-V6       | IDO-MR-E6   | 600 (12U)                    | 1 set     |
| IDO-MR-V8       | IDO-MR-E8   | 800 (16U)                    | 1 set     |
| IDO-MR-V10      | IDO-MR-E10  | 1000 (21U)                   | 1 set     |
| IDO-MR-V12      | IDO-MR-E12  | 1200 (25U)                   | 1 set     |
| IDO-MR-V14      | IDO-MR-E14  | 1400 (30U)                   | 1 set     |
| IDO-MR-V16      | IDO-MR-E16  | 1600 (34U)                   | 1 set     |
| IDO-MR-V20      | IDO-MR-E20  | 2000 (42U)                   | 1 set     |

\* 1 set—2 pcs.

## N PROFILE FOR VERTICAL RAILS



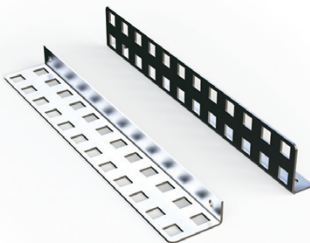
- Application: for 650 and 800 \*\* mm cabinet widths
- Material: 2 mm galvanized sheet steel
- Installation: on the frame profile
- Package includes: assembly parts

| Code       | For cabinet depth (mm) | Package * |
|------------|------------------------|-----------|
| IDO-MR-N4  | 400                    | 1 set     |
| IDO-MR-N5  | 500                    | 1 set     |
| IDO-MR-N6  | 600                    | 1 set     |
| IDO-MR-N7  | 700                    | 1 set     |
| IDO-MR-N8  | 800                    | 1 set     |
| IDO-MR-N10 | 1000                   | 1 set     |

\* 1 set—2 pcs.

\*\* You have to order 2 sets, for 1400 and 1600 mm heights must be ordered 3 sets. For 800 mm wide cabinets with IDO-MR-Nxx, an IDO-MR-N-B holder (2 sets for 1 set of IDO-MR-Nxx) must be ordered as well.

## L PROFILE FOR VERTICAL RAILS

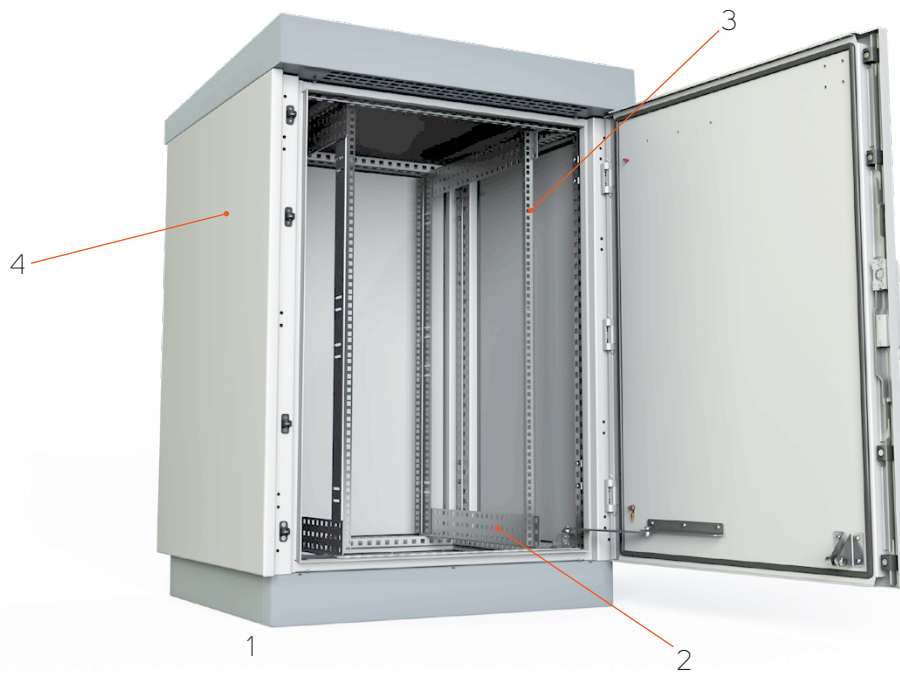


- Application: for 800 and 1000 mm cabinet widths
- Material: 2 mm galvanized sheet steel
- Installation: on the frame profile
- Package includes: assembly parts

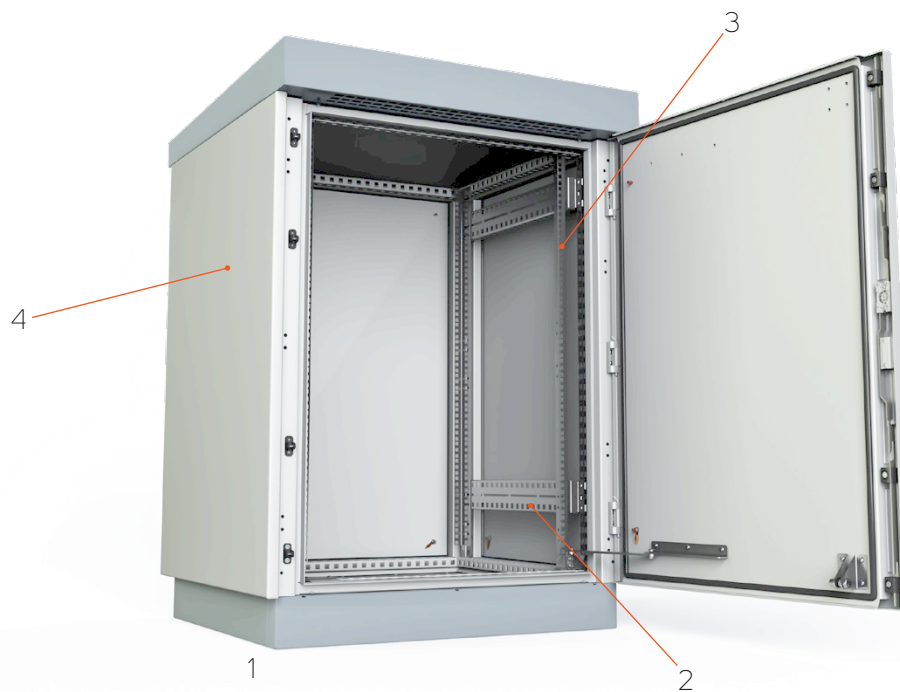
| Code       | For cabinet depth (mm) | Package * |
|------------|------------------------|-----------|
| IDO-MR-L5  | 500                    | 1 set     |
| IDO-MR-L7  | 700                    | 1 set     |
| IDO-MR-L8  | 800                    | 1 set     |
| IDO-MR-L10 | 1000                   | 1 set     |

\* 1 set – 4 pcs.

## TYPICAL MOUNTING OPTIONS FOR outTEG OMR

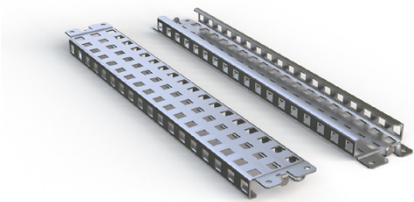


|   | Code            | Description   | Page |
|---|-----------------|---|------|
| 1 | OMR-DN-xxxxxx-R | Outdoor cabinet   | 9    |
| 2 | IDO-MR-Lx       | L profile for 19" vertical rails (1 set)                                      | 14   |
| 3 | IDO-MR-Vx       | Vertical rails (1 set for front and 2 sets for front and rear 19" extrusions) | 14   |
| 4 | OMR-DN-Sxxxx-1  | Plain side panels (2 pcs)   | 10   |



|   | Code            | Description   | Page |
|---|-----------------|---|------|
| 1 | OMR-DN-xxxxxx-R | Outdoor cabinet   | 9    |
| 2 | IDO-MR-Nx       | N profile for 19" vertical rails (2-3 sets depends on height of cabinet)      | 14   |
| 3 | IDO-MR-Vx       | Vertical rails (1 set for front and 2 sets for front and rear 19" extrusions) | 14   |
| 4 | OMR-DN-Sxxxx-1  | Plain side panels (2 pcs)   | 10   |

## HORIZONTAL AND VERTICAL RAILS



- Application: for additional mounting positions
- Material: 2 mm galvanized sheet steel
- Installation: on the frame profile
- Package includes: assembly parts

| VERTICAL RAIL FOR CABINET HEIGHT |                    |           |           |
|----------------------------------|--------------------|-----------|-----------|
| Code                             | For cabinet H (mm) | Load (kg) | Package * |
| IDO-MR-HH6                       | 600                | 240       | 1 set     |
| IDO-MR-HH8                       | 800                | 180       | 1 set     |
| IDO-MR-HH10                      | 1000               | 140       | 1 set     |
| IDO-MR-HH12                      | 1200               | 120       | 1 set     |
| IDO-MR-HH14                      | 1400               | 80        | 1 set     |
| IDO-MR-HH16                      | 1600               | 80        | 1 set     |
| IDO-MR-HH20                      | 2 000              | 50        | 1 set     |

| HORIZONTAL RAIL FOR CABINET WIDTH |                    |           |           |
|-----------------------------------|--------------------|-----------|-----------|
| Code                              | For cabinet W (mm) | Load (kg) | Package * |
| IDO-MR-HW65                       | 650                | 70        | 1 set     |
| IDO-MR-HW8                        | 800                | 50        | 1 set     |
| IDO-MR-HW10                       | 1000               | 50        | 1 set     |

| HORIZONTAL RAIL FOR CABINET DEPTH |                    |           |           |
|-----------------------------------|--------------------|-----------|-----------|
| Code                              | For cabinet D (mm) | Load (kg) | Package * |
| IDO-MR-H4                         | 400                | 140       | 1 set     |
| IDO-MR-H5                         | 500                | 100       | 1 set     |
| IDO-MR-H6                         | 600                | 70        | 1 set     |
| IDO-MR-H7                         | 700                | 60        | 1 set     |
| IDO-MR-H8                         | 800                | 50        | 1 set     |
| IDO-MR-H10                        | 1000               | 50        | 1 set     |

\* 1 set—2 pcs.



## MOUNTING PLATE



- Application: possibility to combine with 19" extrusions
- Material: 3 mm galvanized sheet steel
- Package includes: assembly parts

| Code         | For cabinet size H×W (mm) | Package |
|--------------|---------------------------|---------|
| IDO-MM-F665  | 600 × 650                 | 1 pc    |
| IDO-MM-F865  | 800 × 650                 | 1 pc    |
| IDO-MM-F1065 | 1000 × 650                | 1 pc    |
| IDO-MM-F108  | 1000 × 800                | 1 pc    |
| IDO-MM-F128  | 1200 × 800                | 1 pc    |
| IDO-MM-F1210 | 1200 × 1000               | 1 pc    |
| IDO-MM-F1465 | 1400 × 650                | 1 pc    |
| IDO-MM-F1665 | 1600 × 650                | 1 pc    |
| IDO-MM-F168  | 1600 × 800                | 1 pc    |
| IDO-MM-F1610 | 1600 × 1000               | 1 pc    |
| IDO-MM-F2065 | 2 000 × 650               | 1 pc    |
| IDO-MM-F208  | 2 000 × 800               | 1 pc    |
| IDO-MM-F2010 | 2 000 × 1000              | 1 pc    |

## BAYING KIT

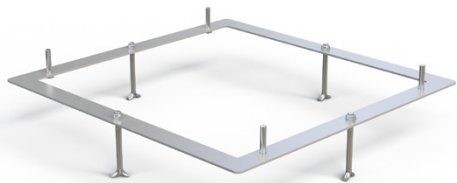


- Baying kit for assembling of cabinets in row
- Application: for assembling with OMR-DN-xxxxxx-R cabinets
- Double-walled construction
- Material: 2 mm AlMg3
- Protection degree of assembled cabinets: IP55
- Color: RAL 7035 (light grey, with UV protection for outdoor use)
- Package includes: assembly parts

| Code         | For cabinet size HxD (mm) | Package |
|--------------|---------------------------|---------|
| OMR-DN-K0606 | 600 × 600                 | 1 set   |
| OMR-DN-K0806 | 800 × 600                 | 1 set   |
| OMR-DN-K1005 | 1000 × 500                | 1 set   |
| OMR-DN-K1006 | 1000 × 600                | 1 set   |
| OMR-DN-K1207 | 1200 × 700                | 1 set   |
| OMR-DN-K1208 | 1200 × 800                | 1 set   |
| OMR-DN-K1406 | 1400 × 600                | 1 set   |
| OMR-DN-K1604 | 1600 × 400                | 1 set   |
| OMR-DN-K1607 | 1600 × 700                | 1 set   |
| OMR-DN-K1608 | 1600 × 800                | 1 set   |
| OMR-DN-K1610 | 1600 × 1000               | 1 set   |
| OMR-DN-K2006 | 2000 × 600                | 1 set   |
| OMR-DN-K2008 | 2000 × 800                | 1 set   |
| OMR-DN-K2010 | 2000 × 1000               | 1 set   |



## FIXING FRAME FOR CAST CONCRETE BASE



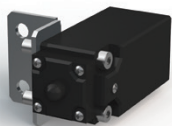
- Fixing frame for right position and installation of outTEG cabinet
- Application: for assembling with both series of outTEG cabinets
- Welded frame with anchors and screws
- Material: 4 mm galvanized sheet steel
- Package includes: assembly parts

| Code         | For cabinet sizes WxD (mm) | Package |
|--------------|----------------------------|---------|
| IDO-MF-P6504 | 650 × 400                  | 1 set   |
| IDO-MF-P6506 | 650 × 600                  | 1 set   |
| IDO-MF-P0805 | 800 × 500                  | 1 set   |
| IDO-MF-P0806 | 800 × 600                  | 1 set   |
| IDO-MF-P0807 | 800 × 700                  | 1 set   |
| IDO-MF-P0808 | 800 × 800                  | 1 set   |
| IDO-MF-P0810 | 800 × 1000                 | 1 set   |
| IDO-MF-P1007 | 1000 × 700                 | 1 set   |
| IDO-MF-P1008 | 1000 × 800                 | 1 set   |



# ACCESSORIES

## DOOR SWITCH



- Material of bracket: 2 mm zinc-plated sheet steel
- Door switch: IP65, plastic, 1NO + 1NC, PG13,5, -25 °C to +70 °C
- Rated current: 10 A/250 VAC
- Plug: grey ST 17/2
- Package includes: door switch and all necessary assembly parts

| Code   | Package |
|--------|---------|
| IDO-DC | 1 pc    |

## POCKET FOR DOCUMENTS



- Material: ABS
- Color: RAL 7035
- Dimensions: 234 × 241 × 31 mm (H × W × D)
- Mounting: with self-adhesive tape
- Package includes: plastic pocket for documents and adhesive tape

| Code     | Package |
|----------|---------|
| ID-PO-A4 | 1 pc    |

## LIGHTING UNIT



- Lamp: LED, 120° angle, 6 500 K
- Luminosity: 400 lm
- Voltage/Frequency: 24-265 V DC/AC ~50/60 Hz
- Power consumption: 5 Watt
- Control of light: Built-in Motion Sensor, switch-off time 5 min.
- Mounting: Magnets
- Operating temperature range: -30°C – 70°C
- Dimensions: 357,4 × 32 × 35,5 mm (H × W × D)
- Weight: 140 gr.
- Certifications: CE, UL

| Code     | Description  | Package |
|----------|--|---------|
| DP-OJ-06 | Lighting unit 400 lm with motion sensor, for 24 to 265V/50-60Hz, magnetic fixing | 1 set   |

## EYE BOLTS



- Eye bolts for crane transport
- Application: for assembling with OMR-DN-xxxxxx-R, holes with internal threads under roof
- Material: zinc-plated carbon steel
- DIN580
- M10
- Package includes: 4 pcs

| Code   | Package |
|--------|---------|
| IDO-EB | 1 set   |



# RAMOS MONITORING SYSTEM

## RAMOS PLUS



- 4 auto-sense intelligent sensor ports; can be set to either input or output
- All accessories powered via Intelligent ports
- Communication via SNMP v1, v2 and v3
- Notification via email and SNMP traps
- Fully embedded TCP/IP and web server
- Syslog and history with sensor graphs
- Network management system integration
- Security login for user and administrator
- Package includes: RAMOS Plus monitoring device, power adapter, 1.5 m crossover patch cord cable, bracket with screws and installation CD

➤ **RAMOS Plus** is an entry model of the RAMOS intelligent range, designed for use in indoor and outdoor cabinets. Available in either standard or GSM options, the latter with a built-in GSM modem and external antenna. Four intelligent ports provide ample opportunity for multiple use. Improved intelligent ports support a full range of accessories, including RAMOS Ultra for intelligent ports.

| RAMOS PLUS     |          |
|----------------|----------|
| Code           | Package  |
| RAMOS PLUS     | 1 set *  |
| RAMOS PLUS GSM | 1 set ** |

\* RAMOS Plus monitoring device, power adapter, 1.5 m crossover patch cord cable, bracket with screws and installation CD.  
 \*\* RAMOS Plus monitoring device with built-in 3G modem, GSM antenna with magnetic gripping and SMA connector, power adapter, 1.5 m crossover patch cord cable, bracket with screws and installation CD.

| INTELLIGENT ACCESSORIES FOR RAMOS PLUS |  |           |
|--|--|-----------|
| Code                                   | Description  | Package   |
| RMS-I-ST                               | One wire temperature sensor with 30 cm cable; can be extended up to 30 m (Cat. 5/6 LAN) via Cat. 5 coupler (included)  | 1 set     |
| RMS-I-STH                              | One wire temperature and humidity sensor with 30 cm cable. Humidity range 0–100%. Can be extended up to 30 m (Cat. 5/6 LAN) via CAT. 5 coupler (included).   | 1 set     |
| RMS-I-STHB                             | One wire temperature and humidity sensor in Box with free 1.5 m LAN cable. Humidity range 0–100%. Can be extended up to 300 m (Cat. 5/6 LAN).  | 1 set     |
| RMS-I-AF                               | Airflow sensor with attached 1.5 m LAN cable (Cat. 5). On/off airflow signal alarm.  | 1 set     |
| RMS-I-AS                               | Siren & Strobe light with attached LAN cable (Cat. 5) 1.5 m. 100 db siren sound and flashing strobe interval 400x per minute. Cable can be extended up to 30 m (Cat. 5/6 LAN).   | 1 set     |
| RMS-I-DE-01                            | Smoke detector with attached 1.5 m LAN cable (Cat. 5). On/off smoke detector alarm. Can be connected via dry contact when 9 V battery is used.   | 1 set     |
| RMS-I-DE-02                            | PIR motion detector with attached 1.5 m LAN cable (Cat. 5). Can be connected in a chain of up to 10 Motion Detector Sensors on a single port. 60° detection angle. 3 m detection range.  | 1 set     |
| RMS-I-DE-04                            | Spot water sensor with 4.5 m cable. Maximum cable extension 60 m.  | 1 set     |
| RMS-I-DE-06                            | Rope water sensor with 3 m detection cable. 1.5 m LAN communication cable (Cat. 5) included (max. length 30 m). Protects water-sensitive equipment from potential disaster. Detects battery Acid for short-term exposure. Sensor cable can be extended via RMS-I-DE-06-EXT3. | 1 set     |
| RMS-I-DE-06-EXT3                       | 3 m sensor rope extension for RMS-I-DE-06; maximum extension 50 m  | 1 set     |
| RMS-I-DE-07                            | Rope water locate sensor with 3 m length detection cable, 6 m non-detection cable and connection cable 1.5 m; can be extended by LAN cable (Cat. 5e/6)   | 1 set     |
| RMS-I-DE-07-EXT3                       | 3 m rope sensor extension for RMS-I-DE-07; maximum extension 50 m  | 1 set     |
| RMS-I-DRC                              | Dry contact with 4.5 m cable, input or output; sources up to 20 mA when used as input. Input voltage range 0 to 5 V.   | 1 set     |
| RMS-I-MK                               | Magnetic door contact with 4.5 m cable (mounting holder included). Maximum extension 300 m. Open/closed contact switch.  | 1 set     |
| RMS-I-PWR-NO                           | AC-Sensor controlled relay normally open (110 V / 220 V). 1.5 m LAN cable included; maximum length 30 m. Built-in 10A Fuse. C13 and C14 socket connection. Switch can be controlled by any sensor.   | 1 set     |
| RMS-I-VC                               | 4–20 mA Converter with attached 1.5 m LAN cable (Cat. 5). Collects analog values from a wide array of sensors.   | 1 set     |
| RMS-I-CON                              | RJ45-RJ45 coupler (Cat. 5e) for sensor cable extension, package of 10 pcs  | 1 set     |
| RAMOS ULTRA-EX-D8-8                    | Expansion board adds 8 dry contacts (IN/OUT) to one intelligent port (RJ45); each can be configured as input or output (sink up to 20 mA). Maximum length of connection cable (LAN Cat. 5/6) 300 m.  | 1 set     |
| RMS-U-DST                              | Daisy-chain temperature sensor with attached 1.5 m LAN cable (Cat. 5). Up to 8 sensors can be connected to a single intelligent sensor port in 150 m total cable length.   | 1 set     |
| RMS-U-DST-8                            | Package with 8 pcs of RMS-U-DST  | 1 package |
| RMS-U-RB-8                             | Box with 8 changeover relay contacts for control (manually or via notification)  | 1 set     |

## RAMOS MICRO



- 2 universal RJ12 ports through which up to 5 parameters can be monitored.
- 2 input contacts for connecting detectors or contacts
- Power supply: PoE or external 5V power supply (optional accessory RMS-PW-05)
- Protocols: SNMP, XML
- Communication: LAN and WiFi
- Dimensions: 30 × 103 × 68 mm
- Built-in webservice
- Package includes: RAMOS Micro, brackets, temperature sensor with 3m cable

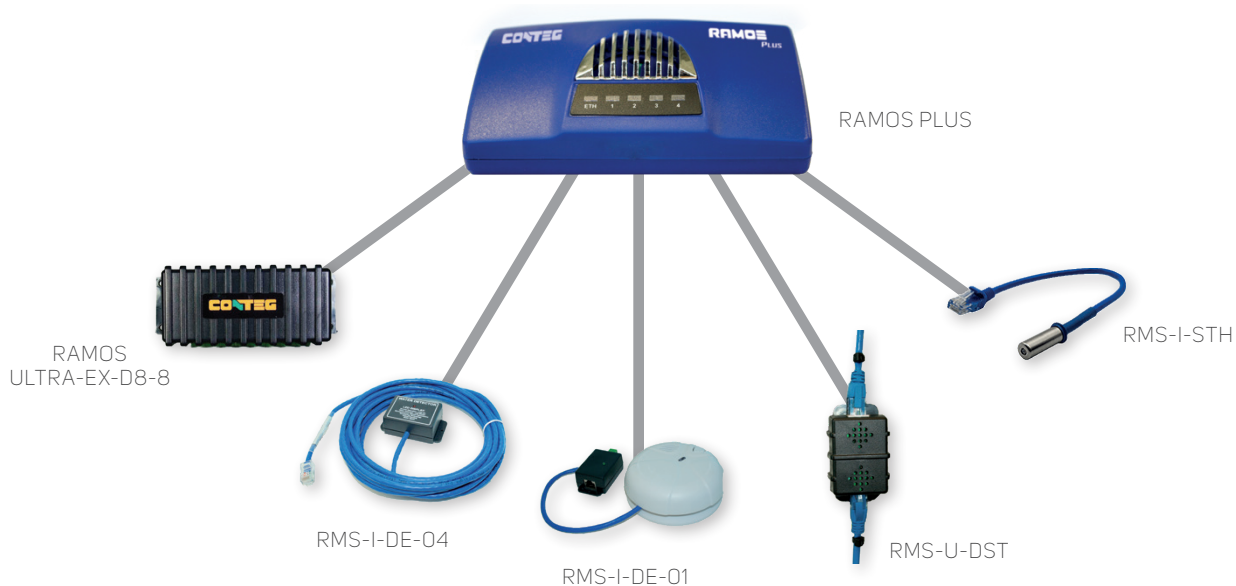
➤ **RAMOS Micro** is a simple small solution for monitoring the environment. With two new universal ports it can monitor up to 5 sensors (temperature, humidity, flood, pressure, CO<sub>2</sub>, etc.) and with 2 binary inputs it can detect other possible parameters such as door contacts, smoke, motion, flood detectors, etc. It supports PoE power supply and WiFi communication.

With the new universal ports, new accessories can be connected, such as spot water detection and rope water detection, or a special sensor for pressure and CO<sub>2</sub> measurement.

| RAMOS MICRO |         |
|-------------|---------|
| Code        | Package |
| RAMOS Micro | 1 set   |

| INTELLIGENT ACCESSORIES FOR RAMOS MICRO |  |         |
|---|--|---------|
| Code                                    | Description  | Package |
| RMS-STB                                 | Temperature sensor in a box with 3m cable.                               | 1 set   |
| RMS-STHB                                | Temperature and humidity sensor in a box with 3m cable.                  | 1 set   |
| RMS-SQAB                                | Air quality sensor in a box with 3m cable.                               | 1 set   |
| RMS-STHCOB                              | Temperature, humidity and CO <sub>2</sub> sensor in a box with 3m cable. | 1 set   |
| RMS-DE-07                               | Spot water detection with 3m fixed cable.                                | 1 set   |
| RMS-DE-06                               | Rope water detection.  | 1 set   |

## Example of accessories for RAMOS Plus





# CLIMATE CONTROL SOLUTIONS FOR outTEG OMR

## OUTDOOR COOLING UNITS

### COMPACT—external mounting position



- Housing material: powder coated steel sheet/ stainless steel
- Color: RAL 7035 (light grey)
- Refrigerant: R134a
- Protection degree:
  - Cabinet air circuit: IP56
  - Ambient air circuit: IP24
- Heater included
- ALU filter included
- MODBUS communication included
- Mounting: External mounting
- Certification: CE, cURus, cULus
- Cut-outs for installation in CONTEG Modification Center
- Package includes: unit ready for connection

**Note: Comes with outTEG outdoor cabinets, with a cut-out as specified on the side panel or door.**



External mounting position

#### OUTDOOR AIR-CONDITIONING UNITS—WALL-MOUNTED, 290-1 000 W

| Code *                                     |                     | AC-WMO-04-40HC       | AC-WMO-05-40HC       | AC-WMO-07-40HC       | AC-WMO-10-40HC       |
|--|---------------------|----------------------|----------------------|----------------------|----------------------|
| Material                                   |                     | sheet steel          | sheet steel          | sheet steel          | sheet steel          |
| Dimensions (mm)                            | H                   | 480                  | 830                  | 830                  | 900                  |
|  | W                   | 250                  | 304                  | 304                  | 304                  |
|  | D                   | 190                  | 270                  | 270                  | 270                  |
| Minimum cabinet dimensions (doors or side) | H × W, H × D        | 600 × 400 mm         | 1000 × 500 mm        | 1000 × 500 mm        | 1000 × 500 mm        |
| Voltage/Frequency **                       |                     | 230 V; 50/60 Hz ~N   | 230 V; 50/60 Hz ~N   | 230 V; 50/60 Hz ~N   | 230 V; 50/60 Hz ~N   |
| Cooling capacity to DIN 3168               | L35 L35             | 290 W                | 550 W                | 750 W                | 1000 W               |
|  | L35 L50             | 250 W                | 445 W                | 650 W                | 660 W                |
| Rated power consumption                    | L35 L35             | 270 W                | 410 W                | 470 W                | 770 W                |
| Internal heater                            |                     | 150 W                | 400 W                | 400 W                | 400 W                |
| Max. air volume flow                       | Ambient air circuit | 85 m³/h              | 315 m³/h             | 315 m³/h             | 320 m³/h             |
|  | Cabinet air circuit | 85 m³/h              | 165 m³/h             | 165 m³/h             | 375 m³/h             |
| Rated current                              | L35 L35             | 1,3 A                | 2,6 A                | 3,1 A                | 4 A                  |
| Starting current                           |                     | 8 A                  | 10 A                 | 11 A                 | 16 A                 |
| Pre-Fuse T                                 |                     | 2,5 A                | 4 A                  | 5 A                  | 9 A                  |
| Operating temperature range                |                     | -40 °C/+55 °C        | -40 °C/+55 °C        | -40 °C/+55 °C        | -40 °C/+55 °C        |
| Temperature range setting min/max          |                     | +20 °C/+50 °C        | +20 °C/+50 °C        | +20 °C/+50 °C        | +20 °C/+50 °C        |
| Weight                                     |                     | 15 kg                | 30 kg                | 30 kg                | 38 kg                |
| Compressor                                 |                     | reciprocating        | reciprocating        | reciprocating        | reciprocating        |
| Connection                                 |                     | connection terminals | connection terminals | connection terminals | connection terminals |

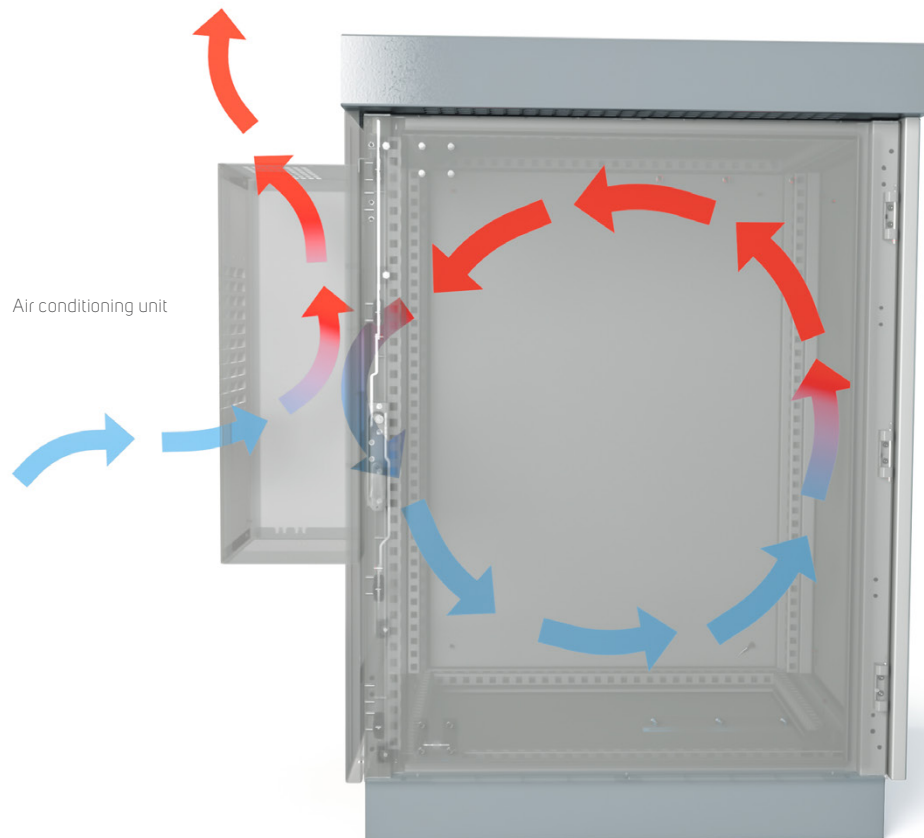
\* For stainless steel version use AC-WMO-xx-x2xx.

\*\* Other input voltage upon request.

**OUTDOOR AIR-CONDITIONING UNITS—WALL-MOUNTED, 1500-4 000 W**

| Code *                                     |                     | AC-WMO-15-40HC       | AC-WMO-20-40HC       | AC-WMO-30-40HC       | AC-WMO-40-40HC       | AC-WMO-60-600C-M                    |
|--|---------------------|----------------------|----------------------|----------------------|----------------------|-------------------------------------|
| Material                                   |                     | sheet steel          | sheet steel          | sheet steel          | sheet steel          | sheet steel                         |
| Dimensions (mm)                            | H                   | 1150                 | 1150                 | 1550                 | 1550                 | 1135                                |
|  | W                   | 395                  | 395                  | 457                  | 457                  | 455                                 |
|  | D                   | 270                  | 270                  | 355                  | 355                  | 390                                 |
| Minimum cabinet dimensions (doors or side) | H × W, H × D        | 1200 × 600 mm        | 1200 × 600 mm        | 1600 × 800 mm        | 1600 × 800 mm        | 1200 × 600 mm                       |
| Voltage/Frequency **                       |                     | 230 V; 50/60 Hz ~N   | 230 V; 50/60 Hz ~N   | 230 V; 50/60 Hz ~N   | 230 V; 50/60 Hz ~N   | 380-415V 50Hz 3~ / 400-460V 60Hz 3~ |
| Cooling capacity to DIN 3168               | L35 L35             | 1500 W               | 2 000 W              | 3 000 W              | 4 000 W              | 6 000 W                             |
|  | L35 L50             | 1250 W               | 1600 W               | 2 380 W              | 3 180 W              | 4 800 W                             |
| Rated power consumption                    | L35 L35             | 1070 W               | 1117 W               | 1320 W               | 2 000 W              | 3 000 W                             |
| Internal heater                            |                     | 1000 W               | 1000 W               | 1500 W               | 2 000 W              | 2 000 W                             |
| Max. air volume flow                       | Ambient air circuit | 655 m³/h             | 655 m³/h             | 765 m³/h             | 990 m³/h             | 1080 m³/h                           |
|  | Cabinet air circuit | 400 m³/h             | 400 m³/h             | 950 m³/h             | 950 m³/h             | 935 m³/h                            |
| Rated current                              | L35 L35             | 5,4 A                | 5,5 A                | 5,8 A                | 8,9 A                | 5,9 A                               |
| Starting current                           |                     | 16 A                 | 16 A                 | 30 A                 | 50 A                 | 57 A                                |
| Pre-Fuse T                                 |                     | 12 A                 | 13 A                 | 16 A                 | 20 A                 | 15 A                                |
| Operating temperature range                |                     | -40 °C/+55 °C        | -40 °C/+55 °C        | -40 °C/+55 °C        | -40 °C/+55 °C        | -40 °C/+55 °C                       |
| Temperature range setting min/max          |                     | +20 °C/+50 °C        | +20 °C/50 °C         | +20 °C/50 °C         | +20 °C/50 °C         | +20 °C/50 °C                        |
| Weight                                     |                     | 42 kg                | 49 kg                | 75,3 kg              | 82 kg                | 85 kg                               |
| Compressor                                 |                     | reciprocating        | rotary piston        | rotary piston        | rotary piston        | rotary piston                       |
| Connection                                 |                     | connection terminals | connection terminals | connection terminals | connection terminals | connection terminals                |

\* For stainless steel version use AC-WMO-xx-x2xx. \*\* Other input voltage upon request.



# COOLING AND HEATING

## THERMOELECTRIC COOLERS

| THERMOELECTRIC COOLERS, COOLING POWER 100–800 W |                     |                                |                                 |                                 |                                 |                                   |
|---|---------------------|--------------------------------|---------------------------------|---------------------------------|---------------------------------|-----------------------------------|
| Code  |                     | ID-EP-10X-1                    | ID-EP-10X-4                     | ID-EP-20X-4                     | ID-EP-40X-4                     | ID-EP-80X-4                       |
| Dimensions (mm)                                 | H                   | 200                            | 280                             | 500                             | 600                             | 972                               |
|   | W                   | 304                            | 350                             | 330                             | 432                             | 514                               |
|   | D                   | 138 (74 mm outside of cabinet) | 165 (113 mm outside of cabinet) | 196 (130 mm outside of cabinet) | 202 (135 mm outside of cabinet) | 211 (135,5 mm outside of cabinet) |
| Cut out dimension                               |                     | 160 × 260 mm                   | 252 × 322 mm                    | 472 × 302 mm                    | 550 × 382 mm                    | 922 × 464 mm                      |
| Cooling capacity to DIN 3168                    |                     | 100 W                          | 100 W                           | 200 W                           | 400 W                           | 800 W                             |
| Max. air volume flow                            | Ambient air circuit | 128 m³/h                       | 128 m³/h                        | 106 m³/h                        | 240 m³/h                        | 480 m³/h                          |
|   | Cabinet air circuit | 46 m³/h                        | 46 m³/h                         | 150 m³/h                        | 240 m³/h                        | 480 m³/h                          |
| Voltage/Frequency                               |                     | 24 V DC                        | 230 V AC – 50/60Hz *            | 230 V AC – 50/60Hz *            | 230 V AC – 50/60Hz *            | 230 V AC – 50/60Hz *              |
| Starting current                                |                     | 4,8 A                          | 0,8 A (230V)                    | 1,5 A (230V)                    | 3 A (230V)                      | 6 A (230V)                        |
| Max. current                                    |                     | 7,4 A                          | 0,6 A (230V)                    | 1 A (230V)                      | 2,1 A (230V)                    | 4,2 A (230V)                      |
| Fuse  |                     | 8 A (T)                        | 1 A (T) (230V)                  | 2 A (T) (230V)                  | 4 A (T) (230V)                  | 7 A (T) (230V)                    |
| Connection                                      |                     | connection terminal block      | 8-pole connector                | 8-pole connector                | 8-pole connector                | 8-pole connector                  |
| Operating temp. range                           |                     | –20 °C / +65 °C                | –20 °C / +65 °C                 | –20 °C / +65 °C                 | –20 °C / +65 °C                 | –20 °C / +65 °C                   |
| Weight  |                     | 5,9 kg                         | 9,4 kg                          | 17,2 kg                         | 34 kg                           | 66 kg                             |
| Power supply                                    |                     | ID-PS-120-41                   | integrated                      | integrated                      | integrated                      | integrated                        |

\* 120V AC version on request



ID-EP-10X-1

- Material: stainless steel housing
- Protection degree: IP66
- Sealing: permanent sealing gasket in closed cell foam polyethylene
- Connection by terminal block
- Regulation: for more information, please contact our technical support
- Package includes: thermoelectric cooling unit ready for connection



ID-PS-120-41

| POWER SUPPLIES FOR THERMOELECTRIC UNITS |              |                           |
|---|--------------|---------------------------|
| Code                                    | ID-PS-120-41 |                           |
| Dimensions (mm)                         | H            | 125                       |
|   | W            | 60                        |
|   | D            | 113                       |
| Power                                   |              | 120 W                     |
| Input voltage                           |              | 110–240 V AC; 90–350 V DC |
| Output voltage                          |              | 24 V DC                   |
| Current                                 |              | 5 A                       |
| Weight                                  |              | 0,62 kg                   |
| Mounting position                       |              | DIN rail                  |
| Rated temperature range                 |              | –40 °C / +70 °C           |



Outdoor cabinet outTEG OMR with thermoelectric coolers

## HEATERS



- Material: aluminum profile
- Technology: PTC, self regulating
- ID-EH-80F-4: two heating circuits
- Ingress protection: IP20
- Installation: snap-on fixing on DIN rail 35 mm EN 50022
- Package includes: heater ready for connection

| HEATERS                          |                             |                  |
|----------------------------------|-----------------------------|------------------|
| Code                             | ID-EH-25PF-4                | ID-EH-80F-4      |
| Thermal output (W)               | 250                         | 450/800          |
| Number of heating circuits       | 1                           | 2                |
| Operation voltage (V AC)         | 230                         | 230              |
| Operating temperature range (°C) | -10 °C/+50 °C               | -40 °C/+60 °C    |
| Dimension (mm)                   | H                           | 193              |
|                                  | W                           | 61,5             |
|                                  | D                           | 85               |
| Fan                              | Airflow (m <sup>3</sup> /h) | -                |
|                                  | Operation voltage (VAC)     | 230              |
| Weight (kg)                      | 0,7                         | 0,8              |
| Electrical connection            | 3 poles terminal            | 6 poles terminal |

## THERMOSTAT FOR COOLING AND HEATING



- Sensor element: thermostatic bi-metal
- Maximum tolerance:  $\pm 4$  K
- Switching difference (hysteresis) is  $7^{\circ}\text{C} \pm 3$  K
- Switching capacity (max. load):
  - 15 A resistive/ 2 A inductive @ 120 V AC
  - 10 A resistive/ 2 A inductive @ 120 V AC
  - DC 30 W
  - Connections: 2-pole terminal for AWG 14 max. (2,5 mm<sup>2</sup>)
- Mounting: clip for 35 mm DIN rail
- Dimensions (H x W x D): 55 x 33 x 43 mm
- Setting temperature range: 0 to + 60 °C
- Operating temperature: -20 to + 80 °C
- Weight: 40 g
- Thermostat for cooling—contact normally open
- Thermostat for heating—contact normally closed
- Package includes: thermostat ready for connection

| Code                               | Package |
|------------------------------------|---------|
| <b>Thermostat for cooling (NO)</b> |         |
| ID-EO-TC                           | 1 pc    |
| <b>Thermostat for heating (NC)</b> |         |
| ID-EO-TH                           | 1 pc    |

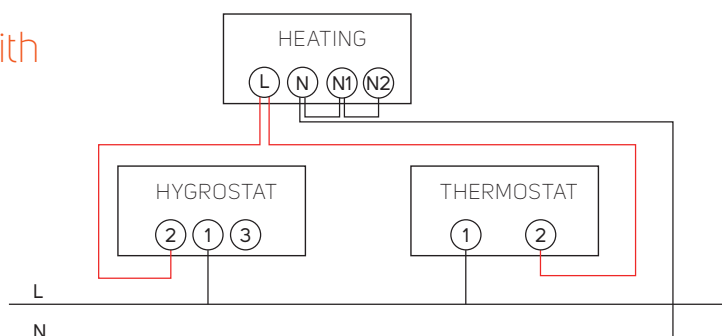
## HYGROSTAT



- Installation: DIN rail 35 mm
- Connection: screw terminals
- Range of humidity control: 35–100 % RH
- Switching capacity (max. load): 5 A/230 V
- Switching hysteresis:  $\pm 3$  % RH
- Dimensions (H x W x D): 67 x 50 x 38 mm
- Package includes: hygrometer ready for connection

| Code     | Package |
|----------|---------|
| ID-EO-HY | 1 pc    |

Circuit diagram of heater controlled with thermostat or hygrometer.



## DRAINAGE DEVICE



- Material: plastic according to UL94 V-0, umbra grey, waterproof with UV protection
- Protection degree: IP67
- Sealing: NBR
- Dimensions: Ø 60×49,5 mm, 17,5 mm inside cabinet
- Water flow rate: 200 ml/hour
- Mounting: vertically at the lowest point, thread M50×1,5 with nut (cut-out Ø 50 mm)
- Package includes: 1 pc of drainage device

| Code     | Package |
|----------|---------|
| ID-EO-DD | 1 pc    |

## PRESSURE COMPENSATOR



- Mounting: PG 29 thread with union nut (cut-out diameter 37 mm)
- Fitting position: vertical (Protection type is restricted to IP54 if fitting position of pressure compensator is not vertical.)
- Material: plastic according to UL94 V-0, light grey RAL 7035
- Protection degree: IP55
- Dimensions: Ø 65,5 × 30,5 mm
- Package includes: 2pcs of compensator

| Code     | Package |
|----------|---------|
| ID-EO-PC | 2 pcs   |

## VENTILATION UNITS—DP-VEN



- One to nine fans
- Possible to install: in 19" extrusions—horizontally
- Temperature range -10 °C to 55 °C
- Thermostat ranging from 0 °C to 60 °C included; no thermostat option
- Voltage range 230V/50Hz (48V DC option)
- Protection category to EN 60 529 IP20
- Color: RAL (standard RAL 9005)
- Package includes: ventilation unit ready for connection

| Code         | Outlet grid | Airflow (m³/h) | Rated current max. (A) | Power consumption (W) | Annual power consumption* (kWh/year) | Possible heat removal** (kW) | Package |
|--------------|-------------|----------------|------------------------|-----------------------|--------------------------------------|------------------------------|---------|
| DP-VEN-03 *  | ID-EF-07    | 336            | 0,270                  | 57                    | 499                                  | 0,57                         | 1 pc    |
| DP-VEN-06 ** | ID-EF-09    | 672            | 0,540                  | 114                   | 999                                  | 1,14                         | 1 pc    |

\* You have to order 2 pcs of ID-EF-07.

\*\* You have to order 2 pcs of ID-EF-09.

## OUTLET FILTER GRID

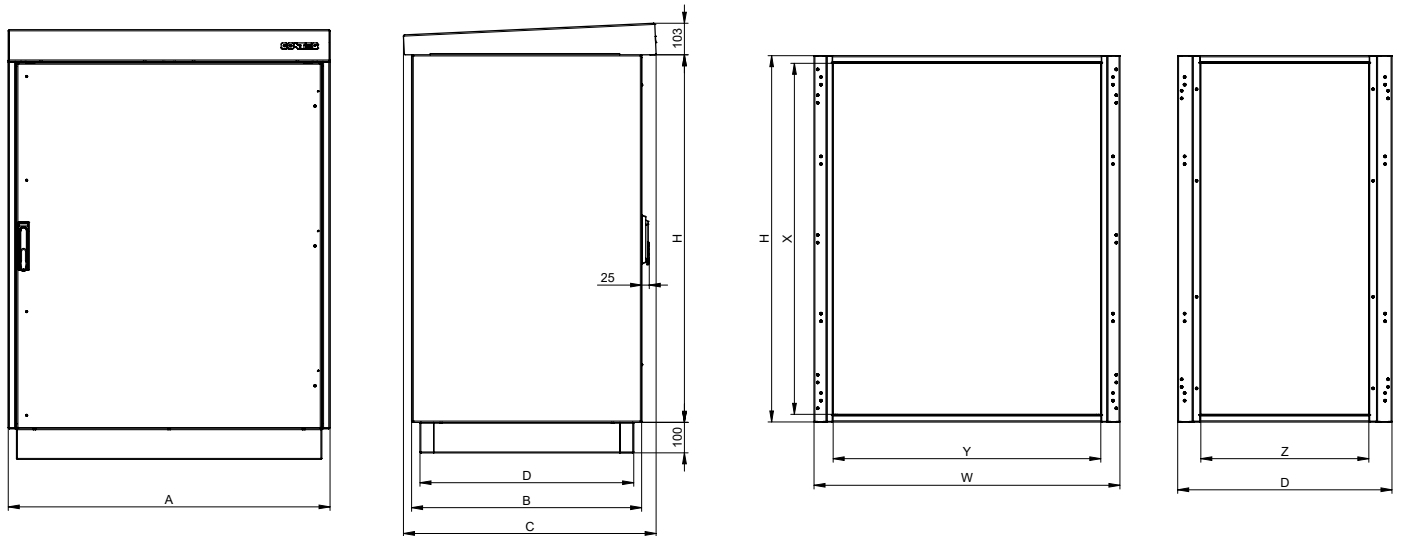


- Material: PC/ABS Alloy, PA 66 GH13 HSL for elastic clips
- Color: RAL 7035
- Protection degree: IP54/IP55
- Package includes: unit ready for mounting.

| Code     | For filter fan units                | Package |
|----------|-------------------------------------|---------|
| ID-EF-07 | 250 × 250 mm, airflow max. 270 m³/h | 1 pc    |
| ID-EF-09 | 325 × 325 mm, airflow max. 800 m³/h | 1 pc    |

# TECHNICAL DRAWINGS

outTEG OMR—free-standing outdoor cabinets—double-walled



| Code            | Height (mm) |      | Width (mm) |      |     | Depth (mm) |      |     |      |
|-----------------|-------------|------|------------|------|-----|------------|------|-----|------|
|                 | H           | X    | W          | A    | Y   | D          | B    | Z   | C    |
| OMR-DN-066506-R | 600         | 550  | 652        | 704  | 527 | 602        | 654  | 450 | 728  |
| OMR-DN-086506-R | 800         | 750  | 652        | 704  | 527 | 602        | 654  | 450 | 728  |
| OMR-DN-106506-R | 1000        | 950  | 652        | 704  | 527 | 602        | 654  | 450 | 728  |
| OMR-DN-100805-R | 1000        | 950  | 802        | 854  | 677 | 502        | 554  | 350 | 628  |
| OMR-DN-120808-R | 1200        | 1150 | 802        | 854  | 677 | 802        | 854  | 650 | 928  |
| OMR-DN-121007-R | 1200        | 1150 | 1002       | 1054 | 877 | 702        | 754  | 550 | 828  |
| OMR-DN-146506-R | 1400        | 1350 | 652        | 704  | 527 | 602        | 654  | 450 | 728  |
| OMR-DN-166504-R | 1600        | 1550 | 652        | 704  | 527 | 402        | 454  | 250 | 528  |
| OMR-DN-160807-R | 1600        | 1550 | 802        | 854  | 677 | 702        | 754  | 550 | 828  |
| OMR-DN-160810-R | 1600        | 1550 | 802        | 854  | 677 | 1002       | 1054 | 850 | 1128 |
| OMR-DN-161008-R | 1600        | 1550 | 1002       | 1054 | 877 | 802        | 854  | 650 | 928  |
| OMR-DN-206506-R | 2000        | 1950 | 652        | 704  | 527 | 602        | 654  | 450 | 728  |
| OMR-DN-200806-R | 2000        | 1950 | 802        | 854  | 677 | 602        | 654  | 450 | 728  |
| OMR-DN-200808-R | 2000        | 1950 | 802        | 854  | 677 | 802        | 854  | 650 | 928  |
| OMR-DN-200810-R | 2000        | 1950 | 802        | 854  | 677 | 1002       | 1054 | 850 | 1128 |
| OMR-DN-201006-R | 2000        | 1950 | 1002       | 1054 | 877 | 602        | 654  | 450 | 728  |
| OMR-DN-201008-R | 2000        | 1950 | 1002       | 1054 | 877 | 802        | 854  | 650 | 928  |

# HEAT LOSS DISPERSION

outTEG OMR—free-standing outdoor cabinet, double-walled,  
measuring inside cabinet,  $\Delta T = 15 \text{ K}$ , wind speed  $0 \text{ m/s}$

| Code            | H (mm) | W (mm) | D (mm) | Thickness of material (mm) | Surface (m <sup>2</sup> ) | Effective area * (m <sup>2</sup> ) | Heating dissipation (W) |
|-----------------|--------|--------|--------|----------------------------|---------------------------|------------------------------------|-------------------------|
| OMR-DN-066506-R | 600    | 650    | 600    | 2,00                       | 2,28                      | 1,60                               | 64,08                   |
| OMR-DN-086506-R | 800    | 650    | 600    | 2,00                       | 2,78                      | 2,06                               | 82,57                   |
| OMR-DN-106506-R | 1000   | 650    | 600    | 2,00                       | 3,28                      | 2,52                               | 101,05                  |
| OMR-DN-100805-R | 1000   | 800    | 500    | 2,00                       | 3,40                      | 2,62                               | 105,17                  |
| OMR-DN-120808-R | 1200   | 800    | 800    | 2,00                       | 5,12                      | 4,01                               | 161,22                  |
| OMR-DN-121007-R | 1200   | 1000   | 700    | 2,00                       | 5,48                      | 4,30                               | 172,67                  |
| OMR-DN-146506-R | 1400   | 650    | 600    | 2,00                       | 4,28                      | 3,44                               | 138,01                  |
| OMR-DN-166504-R | 1600   | 650    | 400    | 2,00                       | 3,88                      | 3,16                               | 126,76                  |
| OMR-DN-160807-R | 1600   | 800    | 700    | 2,00                       | 5,92                      | 4,83                               | 193,96                  |
| OMR-DN-160810-R | 1600   | 800    | 1000   | 2,00                       | 7,36                      | 5,98                               | 240,37                  |
| OMR-DN-161008-R | 1600   | 1000   | 800    | 2,00                       | 7,36                      | 5,98                               | 240,37                  |
| OMR-DN-206506-R | 2000   | 650    | 600    | 2,00                       | 5,78                      | 4,82                               | 193,46                  |
| OMR-DN-200806-R | 2000   | 800    | 600    | 2,00                       | 6,56                      | 5,48                               | 220,28                  |
| OMR-DN-200808-R | 2000   | 800    | 800    | 2,00                       | 7,68                      | 6,41                               | 257,65                  |
| OMR-DN-200810-R | 2000   | 800    | 1000   | 2,00                       | 8,8                       | 7,34                               | 295,01                  |
| OMR-DN-201006-R | 2000   | 1000   | 600    | 2,00                       | 7,6                       | 6,37                               | 256,04                  |
| OMR-DN-201008-R | 2000   | 1000   | 800    | 2,00                       | 8,8                       | 7,34                               | 295,01                  |

\* Cabinet standing alone, area without bottom.



# Do you need a customized solution?

Use services of our **CONTEG Modification Center**.



➤ Individual orders are fulfilled in the **modification center, which is a part of a modern industrial enterprise in Pelhrimov**. The center also has a MODCentrum 29 CNC milling machine. We can cut holes for filter fans, coolers, control panels, and buttons. The cabinets can be made of sheet steel, stainless steel (AISI 304 and 316L) or aluminum.

Cutouts can be made on flat removable parts of the rack walls (doors, cable entries, side panels, roofs and mounting plates), as well as in welded monolithic cabinets.



For more information please contact our sales or technical team at [www.conteg.com/contacts](http://www.conteg.com/contacts)





**CONTEG, spol. s r.o.**

Stetkova 1638/18

140 00 Prague 4

Czech Republic

Tel.: +420 565 300 358

[conteg@conteg.com](mailto:conteg@conteg.com)

[www.conteg.com](http://www.conteg.com)

**CONTEG**