









**DATASHEET**  
Free-standing  
enclosures  
FSE

**CONTEG**

# INDUSTRIAL ENCLOSURES AND THEIR APPLICATION

➤ **CONTEG** offers a comprehensive range of industrial enclosures, that meet all of the requirements for application in even the most demanding industrial environments. We offer not only compact sheet steel enclosures, but also large, free-standing enclosures suitable for connecting in rows. You can choose from many sizes and four types of materials, it depends only on the area of use. All series of enclosures meet the high degree of coverage requirements. Industrial enclosures are manufactured in our production plant in Pelhrimov using state-of-the-art technological processes, thanks to which they have first-class functional properties, mechanical resistance and long service life.

	INDUSTRIAL ENCLOSURES					
	FSE sheet steel	FSM sheet steel	FSM-X stainless steel	WME sheet steel	WME-G glass-paneled doors	WME-X stainless steel
						
Application	Indoor installation	Indoor installation	Indoor installation Outdoor installation Food and chemical industry	Indoor installation	Indoor installation	Indoor installation Outdoor installation Food and chemical industry
Material	Sheet steel	Sheet steel	Stainless steel 1.4301 (AISI 304) Stainless steel 1.4404 (AISI 316L)	Sheet steel	Sheet steel, with glass-paneled doors	Stainless steel 1.4301 (AISI 304) Stainless steel 1.4404 (AISI 316L)
Version	Single-door Double-door	Single-door Double-door	Single-door Double-door	Single-door Double-door	Single-door Double-door	Single-door Double-door
IP rating	IP55	IP55	IP55	IP66 IP55	IP66 IP55	IP66 IP55
Mechanical durability	IK10	IK10	IK10	IK10	IK10 IK8	IK10
Color	RAL 7035	RAL 7035	–	RAL 7035	RAL 7035	–
Surface finish	Epoxypolyester powder coating	Epoxypolyester powder coating	Fine ground surface	Epoxypolyester powder coating	Epoxypolyester powder coating	Fine ground surface



Many applications in the areas of measurement and control, automation, machine and plant control require that the temperature within the racks is controllable.

We calculate the required cooling/heating power to maintain stable thermal comfort for the installed elements inside the enclosures and we then recommend you the appropriate sort of cooling.

- Wall and top mount air conditioning units—cooling capacity from 320 W to 4 000 W
- Thermoelectric unit—cooling and heat output up to 800 W
- Filter fans—air flow 12 to 800 m<sup>3</sup>/h
- Heating units—permanent heating output 45 to 800 W

# FSE—

## FREE-STANDING ENCLOSURES



FSE-200804



➤ **FSE free-standing sheet steel enclosures** are suitable for buying together and will withstand even the most demanding industrial environments. The FSE is a welded enclosure and its frame is made of a special cold-rolled profile. This technological process combined with the patented shape of the profile meets the highest rigidity and load requirements. This enclosure can be used without any additional plinth thanks to the design of the bottom frame; this solution maximizes space for installation of components inside the enclosure. To create a variety of mounting surfaces and planes, we offer a wide range of system accessories designed for optimal use of the frame profile.

### MAIN ADVANTAGES

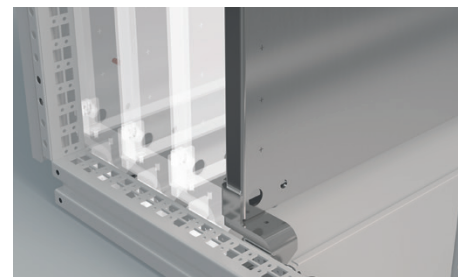
- Welded frame construction made of special cold-rolled profile—powder coated
- The closed cold-rolled profile is made out of a zinc-plated sheet steel and is welded by a laser
- Load capacity 1500 kg
- Single-door and double-door enclosure designs
- Can be installed without an additional supporting plinth
- Designer lift-up handle
- Easy to close doors thanks to a special locking system
- Maximum use of interior space—possibility of placing the mounting plate between the rear posts
- Easy side panel fixing thanks to the possibility of hanging
- Possible to assemble into a row
- 46 sizes from 1 800 × 400 × 500 mm up to 2 200 × 1 200 × 800 mm
- Wide assortment of accessories
- Tailor-made customer solutions—cut-outs according to your requirements before and after final surface finishing accessories
- Norms EN 61439, EN 62208, UL listed



FSE-200804



Wide range of system rails creates additional mounting levels for individual installation.



Maximum use of interior space—possibility of placing the mounting plate between the rear uprights.

# FSE—FREE-STANDING ENCLOSURES

## SHEET STEEL



FSE-208004

FSE-301204

COLOR:  RAL 7035



FSE-301204

## DESCRIPTION

### Material

- Frame: zinc-plated electrolytic material DC1+ZE25/25APC
- Enclosure: sheet steel
- Mounting plate: zinc-plated sheet steel

### Enclosure surface finish

- Epoxypolyester powder coating

### Color

- RAL 7035 for indoor use

### Degree of protection

- IP55 according to the EN 60529 norm (the degree of protection can be reduced after mounting some accessories)

### Mechanical durability

- IK10 according to IEC 62262

### Supply includes

- Welded frame construction of the enclosure
- Full door with swing handle (single-door/two-door), doors are

equipped with a four-point locking system

- The door hinges are located on the right-hand side of the single-door rack (door can be changed to open from right to left)
- Rear and top panel
- Multi-part gland plate
- Mounting plate with raster

### FSE—FREE-STANDING ENCLOSURES, HEIGHT 1800 mm

Enclosure	H (mm)	1800	1800	1800	1800	1800	1800	1800	1800	1800
	W (mm)	400	400	600	600	600	800	800	800	800
Mounting plate	D (mm)	500	600	400	500	600	400	500	500	600
	H1 (mm)	1691	1691	1691	1691	1691	1691	1691	1691	1691
Material thickness (mm)	W2 (mm)	297	297	497	497	497	697	697	697	697
	Rear and top panel	1.5	1.5	1.5	1.5	1.5	1.5	1.5	1.5	1.5
	Door	2	2	2	2	2	2	2	2	2
Door	Mounting plate	3	3	3	3	3	3	3	3	3
	Door	1	1	1	1	1	1	1	2	1
Gland plate, number of parts		2	3	2	2	3	2	2	2	3
Weight (kg)		71.2	72.1	91.2	92.3	95.9	112.3	115.7	118.1	120.5
Code	1 pc	FSE-180405	FSE-180406	FSE-180604	FSE-180605	FSE-180606	FSE-180804	FSE-180805	FSE-280805	FSE-180806

### ACCESSORIES

Side panels	1 set	ID-F-S1805	ID-F-S1806	ID-F-S1804	ID-F-S1805	ID-F-S1806	ID-F-S1804	ID-F-S1805	ID-F-S1805	ID-F-S1806
Baying kit	1 set	ID-F-ROW	ID-F-ROW	ID-F-ROW	ID-F-ROW	ID-F-ROW	ID-F-ROW	ID-F-ROW	ID-F-ROW	ID-F-ROW
Plinth 100 mm	front and rear	1 set	ID-F-PF04	ID-F-PF04	ID-F-PF06	ID-F-PF06	ID-F-PF06	ID-F-PF08	ID-F-PF08	ID-F-PF08
	side parts		ID-F-PS05	ID-F-PS06	ID-F-PS04	ID-F-PS05	ID-F-PS06	ID-F-PS04	ID-F-PS05	ID-F-PS05
Plinth 200 mm	front and rear	1 set	ID-F-F0402	ID-F-F0402	ID-F-F0602	ID-F-F0602	ID-F-F0602	ID-F-F0802	ID-F-F0802	ID-F-F0802
	side parts		ID-F-S0502	ID-F-S0602	ID-F-S0402	ID-F-S0502	ID-F-S0602	ID-F-S0402	ID-F-S0502	ID-F-S0502
Mounting rails	1 set	see pages 14–16								

To order the enclosure without the mounting plate, use order number FSE-xxxxxx-01.

FSE—FREE-STANDING ENCLOSURES, HEIGHT 1 800 mm									
Enclosure	H (mm)	1800	1800	1800	1800	1800	1800	1800	1800
	W (mm)	800	1000	1000	1000	1000	1200	1200	1200
	D (mm)	600	400	400	500	600	400	500	600
Mounting plate	H1 (mm)	1691	1691	1691	1691	1691	1691	1691	1691
	W2 (mm)	697	897	897	897	897	1097	1097	1097
Material thickness (mm)	Rear and top panel	1.5	1.5	1.5	1.5	1.5	1.5	1.5	1.5
	Door	2	2	2	2	2	2	2	2
	Mounting plate	3	3	3	3	3	3	3	3
Door		2	1	2	1	1	2	2	2
Gland plate, number of parts		3	2	2	2	3	4	4	6
Weight (kg)		123.9	138.9	142.3	139.8	140.8	166.2	167.2	168.2
Code	1 pc	FSE-280806	FSE-181004	FSE-281004	FSE-181005	FSE-181006	FSE-281204	FSE-281205	FSE-281206
ACCESSORIES									
Side panels	1 set	ID-F-S1806	ID-F-S1804	ID-F-S1804	ID-F-S1805	ID-F-S1806	ID-F-S1804	ID-F-S1805	ID-F-S1806
Baying kit	1 set	ID-F-ROW	ID-F-ROW	ID-F-ROW	ID-F-ROW	ID-F-ROW	ID-F-ROW	ID-F-ROW	ID-F-ROW
Plinth 100 mm	front and rear	1 set	ID-F-PF08	ID-F-PF10	ID-F-PF10	ID-F-PF10	ID-F-PF10	ID-F-PF12	ID-F-PF12
	side parts		ID-F-PS06	ID-F-PS04	ID-F-PS04	ID-F-PS05	ID-F-PS06	ID-F-PS04	ID-F-PS05
Plinth 200 mm	front and rear	1 set	ID-F-PF0802	ID-F-PF1002	ID-F-PF1002	ID-F-PF1002	ID-F-PF1002	ID-F-PF1202	ID-F-PF1202
	side parts		ID-F-PS0602	ID-F-PS0402	ID-F-PS0402	ID-F-PS0502	ID-F-PS0602	ID-F-PS0402	ID-F-PS0502
Mounting rails	1 set	see pages 14–16							

To order the enclosure without the mounting plate, use order number FSE-xxxxxx-01.

FSE—FREE-STANDING ENCLOSURES, HEIGHT 2 000 mm									
Enclosure	H (mm)	2 000	2 000	2 000	2 000	2 000	2 000	2 000	2 000
	W (mm)	400	400	600	600	600	600	600	800
	D (mm)	500	600	400	500	600	800	800	400
Mounting plate	H1 (mm)	1891	1891	1891	1891	1891	1891	1891	1891
	W2 (mm)	297	297	497	497	497	497	497	697
Material thickness (mm)	Rear and top panel	1.5	1.5	1.5	1.5	1.5	1.5	1.5	1.5
	Door	2	2	2	2	2	2	2	2
	Mounting plate	3	3	3	3	3	3	3	3
Door		1	1	1	1	1	1	1	1
Gland plate, number of parts		2	3	2	2	3	4	4	2
Weight (kg)		76.5	77.9	99.4	101.1	102.8	106.4	106.4	123.6
Code	1 pc	FSE-200405	FSE-200406	FSE-200604	FSE-200605	FSE-200606	FSE-200608	FSE-200608	FSE-200804
ACCESSORIES									
Side panels	1 set	ID-F-S2005	ID-F-S2006	ID-F-S2004	ID-F-S2005	ID-F-S2006	ID-F-S2008	ID-F-S2004	ID-F-S2004
Baying kit	1 set	ID-F-ROW	ID-F-ROW	ID-F-ROW	ID-F-ROW	ID-F-ROW	ID-F-ROW	ID-F-ROW	ID-F-ROW
Plinth 100 mm	front and rear	1 set	ID-F-PF04	ID-F-PF04	ID-F-PF06	ID-F-PF06	ID-F-PF06	ID-F-PF06	ID-F-PF08
	side parts		ID-F-PS05	ID-F-PS06	ID-F-PS04	ID-F-PS05	ID-F-PS06	ID-F-PS08	ID-F-PS04
Plinth 200 mm	front and rear	1 set	ID-F-PF0402	ID-F-PF0402	ID-F-PF0602	ID-F-PF0602	ID-F-PF0602	ID-F-PF0602	ID-F-PF0802
	side parts		ID-F-PS0502	ID-F-PS0602	ID-F-PS0402	ID-F-PS0502	ID-F-PS0602	ID-F-PS0802	ID-F-PS0402
Mounting rails		see pages 14–16							

To order the enclosure without the mounting plate, use order number FSE-xxxxxx-01.

FSE—FREE-STANDING ENCLOSURES, HEIGHT 2 000 mm								
Enclosure	H (mm)	2 000	2 000	2 000	2 000	2 000	2 000	2 000
	W (mm)	800	800	800	1 000	1 000	1 000	1 000
	D (mm)	500	600	800	400	400	500	500
Mounting plate	H1 (mm)	1 891	1 891	1 891	1 891	1 891	1 891	1 891
	W2 (mm)	697	697	697	897	897	897	897
Tloušťka materiálu (mm)	Rear and top panel	1.5	1.5	1.5	1.5	1.5	1.5	1.5
	Door	2	2	2	2	2	2	2
	Mounting plate	3	3	3	3	3	3	3
Door		1	1	1	1	2	1	2
Gland plate, number of parts		2	3	4	2	2	2	2
Weight (kg)		125.5	127	131.5	144.4	148.9	148.4	154.5
Code	1 pc	FSE-200805	FSE-200806	FSE-200808	FSE-201004	FSE-301004	FSE-201005	FSE-301005
ACCESSORIES								
Side panels	1 set	ID-F-S2005	ID-F-S2006	ID-F-S2008	ID-F-S2004	ID-F-S2004	ID-F-S2005	ID-F-S2005
Baying kit	1 set	ID-F-ROW	ID-F-ROW	ID-F-ROW	ID-F-ROW	ID-F-ROW	ID-F-ROW	ID-F-ROW
Plinth 100 mm	front and rear	1 set	ID-F-PF08	ID-F-PF08	ID-F-PF08	ID-F-PF10	ID-F-PF10	ID-F-PF10
	side parts		ID-F-PS05	ID-F-PS06	ID-F-PS08	ID-F-PS04	ID-F-PS04	ID-F-PS05
Plinth 200 mm	front and rear	1 set	ID-F-PF0802	ID-F-PF0802	ID-F-PF0802	ID-F-PF1002	ID-F-PF1002	ID-F-PF1002
	side parts		ID-F-PS0502	ID-F-PS0602	ID-F-PS0802	ID-F-PS0402	ID-F-PS0402	ID-F-PS0502
Mounting rails		see pages 14–16						

To order the enclosure without the mounting plate, use order number FSE-xxxxxx-01.

FSE—FREE-STANDING ENCLOSURES, HEIGHT 2 000 mm								
Enclosure	H (mm)	2 000	2 000	2 000	2 000	2 000	2 000	2 000
	W (mm)	1 000	1 000	1 000	1 200	1 200	1 200	1 200
	D (mm)	600	600	800	400	500	600	800
Mounting plate	H1 (mm)	1 891	1 891	1 891	1 891	1 891	1 891	1 891
	W2 (mm)	897	897	897	1 097	1 097	1 097	1 097
Material thickness (mm)	Rear and top panel	1.5	1.5	1.5	1.5	1.5	1.5	1.5
	Door	2	2	2	2	2	2	2
	Mounting plate	3	3	3	3	3	3	3
Door		1	2	1	2	2	2	2
Gland plate, number of parts		3	3	4	4	4	6	8
Weight (kg)		153.3	159.8	157.8	140.9	177.2	183.2	200.2
Code	1 pc	FSE-201006	FSE-301006	FSE-201008	FSE-301204	FSE-301205	FSE-301206	FSE-301208
Accessories								
Side panels	1 set	ID-F-S2006	ID-F-S2006	ID-F-S2008	ID-F-S2004	ID-F-S2005	ID-F-S2006	ID-F-S2008
Baying kit	1 set	ID-F-ROW	ID-F-ROW	ID-F-ROW	ID-F-ROW	ID-F-ROW	ID-F-ROW	ID-F-ROW
Plinth 100 mm	front and rear	1 set	ID-F-PF10	ID-F-PF10	ID-F-PF10	ID-F-PF12	ID-F-PF12	ID-F-PF12
	side parts		ID-F-PS06	ID-F-PS06	ID-F-PS08	ID-F-PS04	ID-F-PS05	ID-F-PS06
Plinth 200 mm	front and rear	1 set	ID-F-PF1002	ID-F-PF1002	ID-F-PF1002	ID-F-PF1202	ID-F-PF1202	ID-F-PF1202
	side parts		ID-F-PS0602	ID-F-PS0602	ID-F-PS0802	ID-F-PS0402	ID-F-PS0502	ID-F-PS0602
Mounting rails		see pages 14–16						

To order the enclosure without the mounting plate, use order number FSE-xxxxxx-01.

FSE—FREE-STANDING ENCLOSURES, HEIGHT 2 200 mm									
Enclosure	H (mm)	2 200	2 200	2 200	2 200	2 200	2 200	2 200	2 200
	W (mm)	400	600	600	800	800	1000	1200	1200
	D (mm)	600	600	800	600	800	600	600	800
Mounting plate	H1 (mm)	2 091	2 091	2 091	2 091	2 091	2 091	2 091	2 091
	W2 (mm)	297	497	497	697	697	897	1097	1097
Material thickness (mm)	Rear and top panel	1.5	1.5	1.5	1.5	1.5	1.5	1.5	1.5
	Door	2	2	2	2	2	2	2	2
	Mounting plate	3	3	3	3	3	3	3	3
Door		1	1	1	1	1	1	2	2
Gland plate, number of parts		3	3	4	3	4	3	6	8
Weight (kg)		81.5	108.2	112.5	134.9	139.9	161.5	198.2	205.2
Code	1 pc	FSE-220406	FSE-220606	FSE-220608	FSE-220806	FSE-220808	FSE-221006	FSE-321206	FSE-321208
ACCESSORIES									
Side panels	1 set	ID-F-S2206	ID-F-S2206	ID-F-S2208	ID-F-S2206	ID-F-S2208	ID-F-S2206	ID-F-S2206	ID-F-S2208
Baying kit	1 set	ID-F-ROW	ID-F-ROW	ID-F-ROW	ID-F-ROW	ID-F-ROW	ID-F-ROW	ID-F-ROW	ID-F-ROW
Plinth 100 mm	front and rear	1 set	ID-F-PF04	ID-F-PF06	ID-F-PF06	ID-F-PF08	ID-F-PF08	ID-F-PF10	ID-F-PF12
	side parts		ID-F-PS06	ID-F-PS06	ID-F-PS08	ID-F-PS06	ID-F-PS08	ID-F-PS06	ID-F-PS06
Plinth 200 mm	front and rear	1 set	ID-F-PF0402	ID-F-PF0602	ID-F-PF0602	ID-F-PF0802	ID-F-PF0802	ID-F-PF1002	ID-F-PF1202
	side parts		ID-F-PS0602	ID-F-PS0602	ID-F-PS0802	ID-F-PS0602	ID-F-PS0802	ID-F-PS0602	ID-F-PS0602
Mounting rails		see pages 14–16							

To order the enclosure without the mounting plate, use order number FSE-xxxxxx-01.

## Recommended Accessories



Cooling units



Filter fans

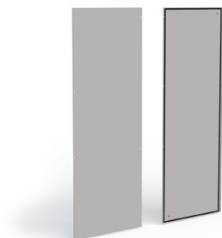


Horizontal and vertical extrusions

# FSE—FREE-STANDING ENCLOSURES

## ACCESSORIES

### SIDE PANELS



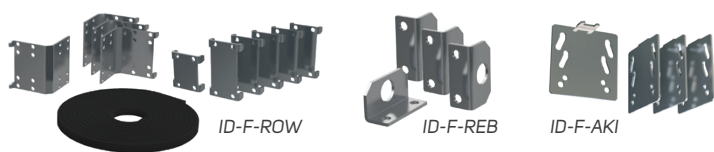
- Material: 1.5mm sheet steel
- Color: RAL 7035
- Supply includes: mounting accessories

### PLINTHS



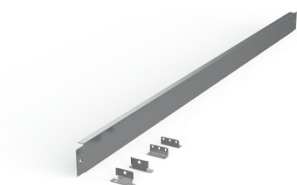
- Material: corner pieces 2mm, other 1.5mm sheet steel
- Color: RAL 9005
- It is necessary to order front and side set together
- Possibility of installing two plinths of 100 mm height apart
- Supply includes: mounting accessories

### BAYING KITS



- Clamps material: 3mm (5mm for eye-bolts) zinc-plated sheet steel
- Seal material: polyethylene foam PE-01, density 30-35 kg/m<sup>3</sup>
- Supply includes:
  - ID-F-ROW: 4 pcs corner clamps, 6 pcs flat joints, gaskets, mounting accessories
  - ID-F-REB: 4 flat eye bolts, mounting accessories
  - ID-F-AKI: 4 flat clamps for indoor and outdoor mounting, mounting accessories

### MOUNTING PLATE—FILLER



- Material: 1.5mm zinc-plated sheet steel
- Supply includes: mounting accessories and wall-mounting brackets

Code	For enclosure height × depth (mm)	Package *
ID-F-S1804	1800 × 400	1 set
ID-F-S1805	1800 × 500	1 set
ID-F-S1806	1800 × 600	1 set
ID-F-S2004	2000 × 400	1 set
ID-F-S2005	2000 × 500	1 set
ID-F-S2006	2000 × 600	1 set
ID-F-S2008	2000 × 800	1 set
ID-F-S2206	2200 × 600	1 set
ID-F-S2208	2200 × 800	1 set

\* 1 set—2 pcs.

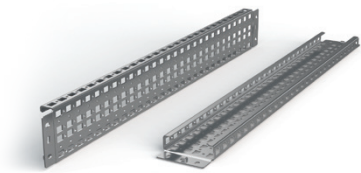
Code for 100 mm high plinth	Code for 200 mm high plinth	For enclosure width (mm)	Package
<b>Plinth—front and rear set</b>			
ID-F-PF04	ID-F-PF0402	400	1 set
ID-F-PF06	ID-F-PF0602	600	1 set
ID-F-PF08	ID-F-PF0802	800	1 set
ID-F-PF10	ID-F-PF1002	1000	1 set
ID-F-PF12	ID-F-PF1202	1200	1 set
<b>Plinth—sides set</b>			
ID-F-PS04	ID-F-PS0402	400	1 set
ID-F-PS05	ID-F-PS0502	500	1 set
ID-F-PS06	ID-F-PS0602	600	1 set
ID-F-PS08	ID-F-PS0802	800	1 set

Code	Package
ID-F-ROW	4 pcs corner clamps and 6 pcs flat joints, gaskets
ID-F-REB	4 pcs flat eye bolts
ID-F-AKI	4 pcs flat clamps for indoor and outdoor mounting

Code	For enclosure height (mm)
ID-F-MMP18	1800
ID-F-MMP20	2000
ID-F-MMP22	2200



## HORIZONTAL/VERTICAL EXTRUSIONS



ID-F-H (for mounting on the sides of the frame profiles)



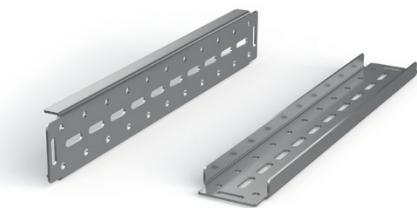
ID-F-NH (for mounting between the frame profiles)

- Material: 2 mm zinc-plated sheet steel
- Rail width: 90 mm (ID-F-H), 41.2 mm (ID-F-NH)
- Application: to create more mounting planes (horizontal and vertical)
- Mounting: ID-F-Hx on the sides of the frame profiles
- Mounting: ID-F-NHx between the frame profiles
- Supply includes: mounting accessories

Code	For enclosures with height/width/depth (mm)	Load capacity in horizontal position	Load capacity in vertical position	Package *
<b>Mounting on the sides of the frame profiles</b>				
ID-F-H4	400	140 kg	240 kg	1 set
ID-F-H5	500	100 kg	240 kg	1 set
ID-F-H6	600	70 kg	240 kg	1 set
ID-F-H8	800	50 kg	180 kg	1 set
ID-F-H10	1000	50 kg	140 kg	1 set
ID-F-H12	1200	50 kg	120 kg	1 set
ID-F-H18	1800	36 kg	80 kg	1 set
ID-F-H20	2 000	32 kg	70 kg	1 set
ID-F-H22	2 200	28 kg	65 kg	1 set
<b>Mounting between the frame profiles</b>				
ID-F-NH4	400	95 kg	95 kg	1 set
ID-F-NH5	500	85 kg	85 kg	1 set
ID-F-NH6	600	70 kg	70 kg	1 set
ID-F-NH8	800	56 kg	56 kg	1 set
ID-F-NH10	1000	45 kg	45 kg	1 set
ID-F-NH12	1200	35 kg	35 kg	1 set
ID-F-NH18	1800	21 kg	21 kg	1 set
ID-F-NH20	2 000	20 kg	20 kg	1 set
ID-F-NH22	2 200	19 kg	19 kg	1 set

\* 1 set—2 pcs.

## HORIZONTAL EXTRUSIONS



- Material: 3mm zinc-plated sheet steel
- Rail width: 87.5 mm
- Application: for installing high weight components
- Mounting: mount on frame profiles
- Supply includes: mounting accessories

Code	For enclosure width/depth (mm)	Load capacity in horizontal position	Package *
ID-F-HH4	400	260 kg	1 set
ID-F-HH5	500	210 kg	1 set
ID-F-HH6	600	175 kg	1 set
ID-F-HH8	800	130 kg	1 set
ID-F-HH10	1000	100 kg	1 set
ID-F-HH12	1200	65 kg	1 set

\* 1 set—2 pcs.

## DOOR-MOUNTING RAILS

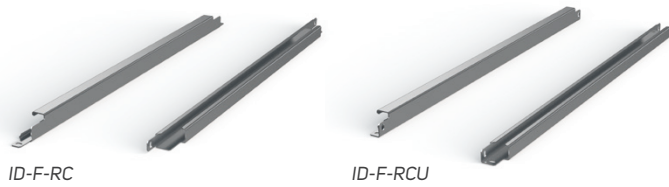


- Material: 2mm zinc-plated sheet steel
- Rail width: 20 mm
- Application: for creating more mounting planes on the inner sides of the doors
- Mounting: into the door frame
- Supply includes: mounting accessories

Code	For door/wing dimensions (mm)	Package *
ID-F-VD4	400	1 set
ID-F-VD5	500	1 set
ID-F-VD6	600	1 set
ID-F-VD8	800	1 set
ID-F-VD10	1000	1 set

\* 1 set—2 pcs.

## PROFILE FOR CABLE FIXING

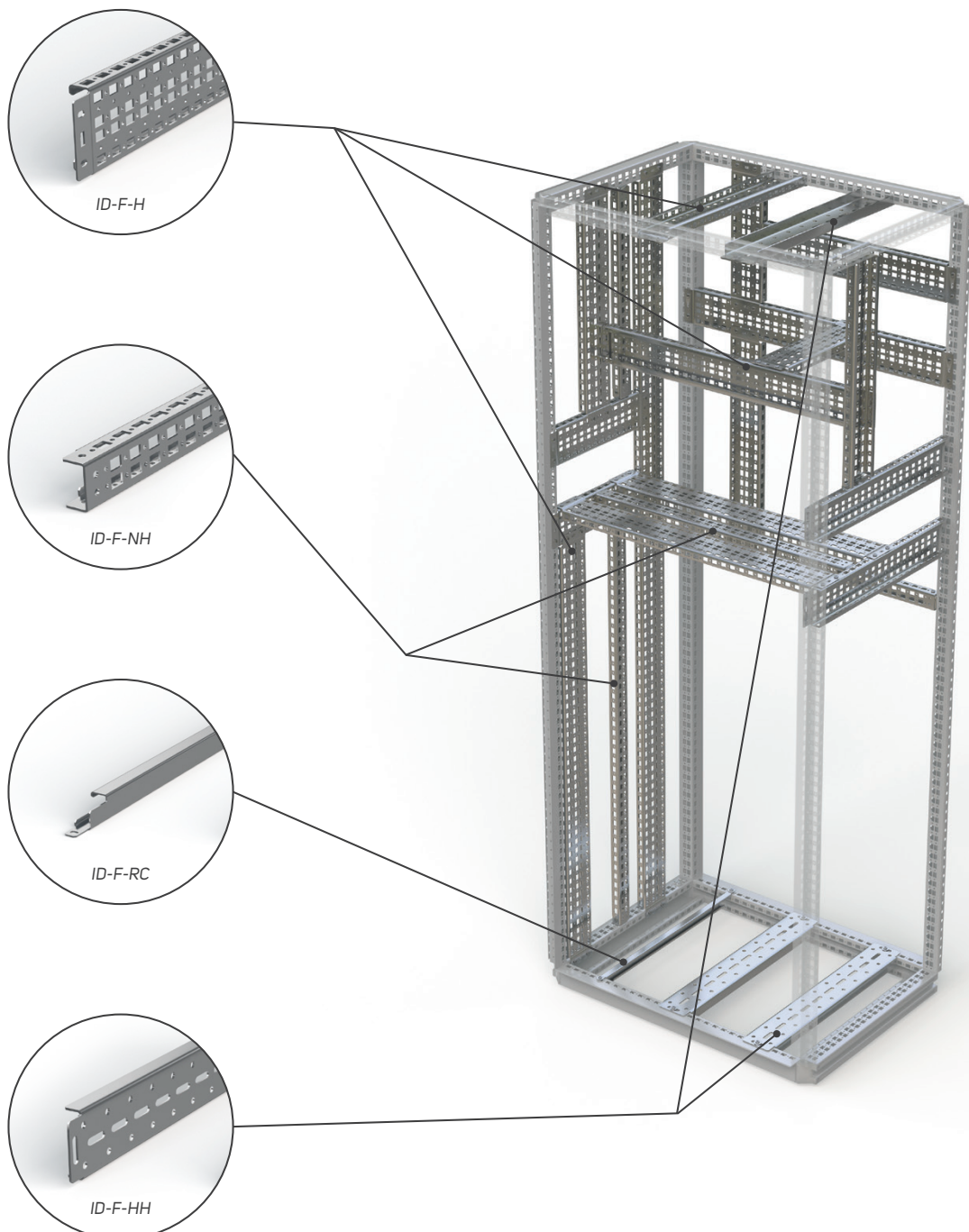


- Material: 2mm zinc-plated sheet steel
- Application: for cable glands
- Mounting: mount on the lower side profile of the frame or on the mounting plate (ID-F-RCUxx)
- Mounting: mount between the bottom side frame profiles (ID-F-RCxx)
- Supply includes: mounting accessories

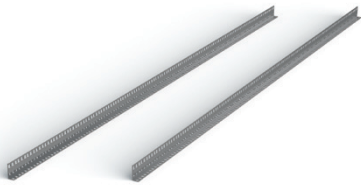
Code	Code	For enclosure width/depth (mm)	Package *
ID-F-RC4	ID-F-RCU4	400	1 set
ID-F-RC6	ID-F-RCU6	600	1 set
ID-F-RC8	ID-F-RCU8	800	1 set
ID-F-RC10	ID-F-RCU10	1000	1 set
ID-F-RC12	ID-F-RCU12	1200	1 set

\* 1 set—2 pcs.

Possible to install horizontal and vertical rails



## 19" RAILS



- Material: 2mm zinc-plated sheet steel
- Application: to make 19" planes in the FSE enclosures
- Mounting: onto the ID-F-UBxx + ID-F-Hxx brackets
- Supply includes: 19" vertical extrusions and mounting accessories

Code *	For enclosure height × width (mm)	Package *
ID-F-V186	1 800 × 600 (36U)	1 set
ID-F-V206	2 000×600 (42U)	1 set
ID-F-V226	2 200×600 (46U)	1 set
ID-F-V188	1 800×800 (36U)	1 set
ID-F-V208	2 000×800 (42U)	1 set
ID-F-V228	2 200×800 (46U)	1 set

\* it's necessary to order 19" brackets ID-F-UBxx.

## 19" BRACKETS



ID-F-UB08

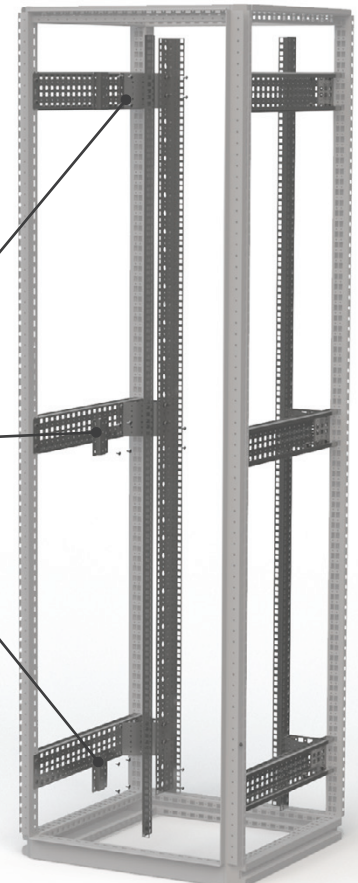
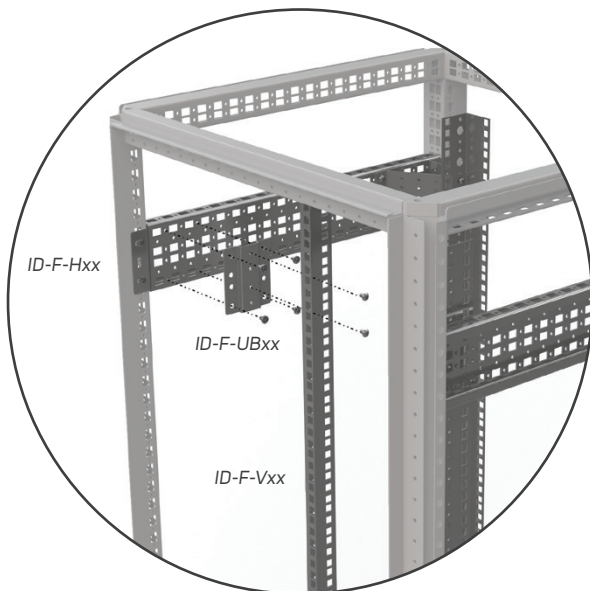
ID-F-UB06

- Material: 1.5mm (ID-F-UB06); 2mm (ID-F-UB08) zinc-plated sheet steel
- Application: to make 19" planes in the FSE enclosures of width 600 a 800 mm
- Mounting: onto system extrusions ID-F-Hxx
- Supply includes: brackets for 19" vertical extrusions and mounting accessories

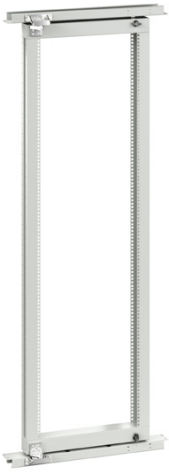
Code	For enclosure width (mm)	Package *
ID-F-UB06	600	1 set
ID-F-UB08	800	1 set

\* 1 set—6 pcs.

## Mounting 19" extrusion



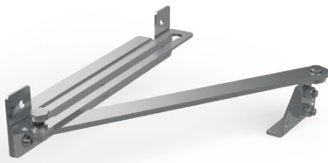
## 19" SWING FRAME



- Material: 2mm sheet steel
- Swing frame load-bearing capacity: 150 kg
- Use: to create a swinging 19" plane and an access point to the back of the rack enclosure with width of 800 mm
- Installation: onto the enclosure structure
- Supply includes: 19" swing frame including a lock and horizontal crossbars for mounting

Code	For enclosure height × width (mm)	Package
ID-F-1808-SF15	1800 × 800	1 set
ID-F-2008-SF15	2000 × 800	1 set
ID-F-2208-SF15	2200 × 800	1 set

## DOOR STOP



- Application: for FSE enclosures
- Supply includes: door stop and mounting accessories

Code	Package
ID-F-DS	1 pc

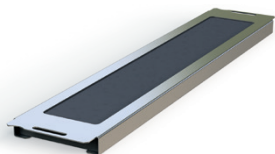
## DOOR SWITCH



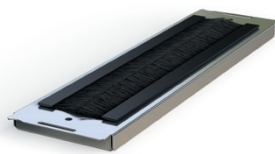
- Brackets material: 2mm zinc-plated sheet steel
- Door switch: IP65, plastic, 1NO + 1NC, PG13.5, -25 °C to +70 °C
- Supply includes: door switch and mounting accessories

Code	Package
ID-F-DC	1 pc

## CABLE GLAND PLATE WITH GASKET



ID-F-CG1xx

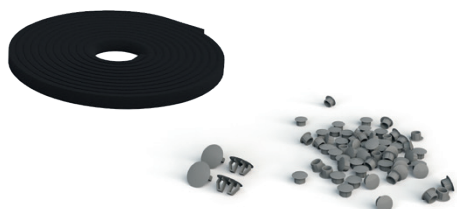


ID-F-CG2xx

- Material: 1mm zinc-plated sheet steel
- Application: for cable introduction
- Version: with PU sealing (ID-F-CG1xx); with two rows of brushes (ID-F-CG2xx)
- Mounting: between the frame profiles to replace the cable gland plate
- Supply includes: mounting accessories

Code	Code	For enclosure width (mm)	Package
ID-F-CG104	ID-F-CG204	400	1 set
ID-F-CG106	ID-F-CG206	600	1 set
ID-F-CG108	ID-F-CG208	800	1 set
ID-F-CG110	ID-F-CG210	1000	1 set
ID-F-CG112	ID-F-CG212	1200	1 set

## SEALING SET IP55



- Material: PVC
- Application: plugs and sealing tape for IP55 protection
- Supply includes: whole set for FSE enclosures

Code	Package
ID-F-KIT55	1 pc

## POCKETS FOR DOCUMENTS



- Material: ABS
- Color: RAL 7035
- Dimensions: 234 × 241 × 31 mm (H × W × D)
- Mounting: with a self-adhesive tape
- Supply includes: pocket for documents and self-adhesive tape



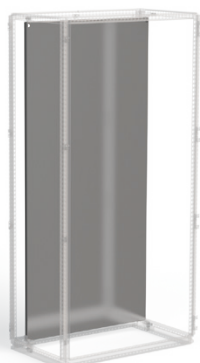
- Material: 1mm sheet steel
- Color: RAL 7035
- Mounting: onto the door frame
- Supply includes: pocket for documents and mounting accessories

Code	Package
ID-PO-A4	1 pc

Code	For door/wing dimensions (mm)	Package
ID-F-MP04	400	1 set
ID-F-MP06	600	1 set
ID-F-MP08	800	1 set
ID-F-MP10	1000	1 set
ID-F-MP102 *	1000 2D	1 set
ID-F-MP06 *	1200	1 set

\* Pocket for double-winged enclosure, width suitable for mounting onto the right wing.

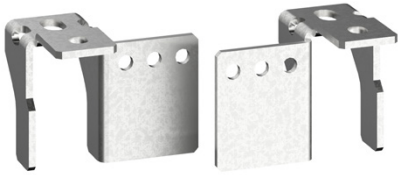
## SPARE MOUNTING PLATE



- Material: 3mm zinc-plated sheet steel
- Supply includes: mounting plate with marked raster, mounting accessories and brackets

Code	For enclosure height × width (mm)
ID-F-SP1804	1800 × 400
ID-F-SP1806	1800 × 600
ID-F-SP1808	1800 × 800
ID-F-SP1810	1800 × 1000
ID-F-SP1812	1800 × 1200
ID-F-SP2004	2000 × 400
ID-F-SP2006	2000 × 600
ID-F-SP2008	2000 × 800
ID-F-SP2010	2000 × 1000
ID-F-SP2012	2000 × 1200
ID-F-SP2204	2200 × 400
ID-F-SP2206	2200 × 600
ID-F-SP2208	2200 × 800
ID-F-SP2210	2200 × 1000
ID-F-SP2212	2200 × 1200

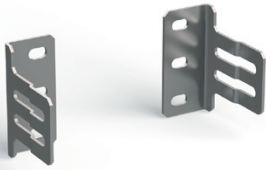
## LOWER BRACKETS FOR MOUNTING PLATES



- Material: 5 mm zinc-plated sheet steel
- Application: to allow the mounting plate to be moved out of the rear position of the frame
- Mounting: mount on the lower side of the frame profile
- Supply includes: mounting accessories

Code	Package
ID-F-SBR	1 pc

## SIDE BRACKETS FOR MOUNTING PLATES



- Material: 2mm zinc-plated sheet steel
- Application: for additional mounting plate fixation and vibration reduction
- Mounting: mount on horizontal ID-F-Hxx or ID-F-NHxx rails or directly on the upright
- Supply includes: mounting accessories

Code	Typ	Package
ID-F-LBP	Side brackets for mounting plates	1 set

## DIVIDER PANEL



- Material: 1.5mm zinc-plated sheet steel
- Application: to separate the space between given sections of certain enclosure ranges
- Mounting: mount onto the enclosure upright
- Supply includes: mounting accessories

Code	For enclosure height × depth (mm)
ID-F-DW1804	1800 × 400
ID-F-DW1805	1800 × 500
ID-F-DW1806	1800 × 600
ID-F-DW2004	2 000 × 400
ID-F-DW2005	2 000 × 500
ID-F-DW2006	2 000 × 600
ID-F-DW2008	2 000 × 800
ID-F-DW2206	2 200 × 600
ID-F-DW2208	2 200 × 800

## UTILITY LECTERN



- Material: 1.5mm sheet steel
- Color: RAL 7035
- Mounting: mount onto the door frame
- Dimensions: depth 356 mm, width—suitable for the specific enclosure dimensions, for enclosures with a width of 1 200 mm and double-winged enclosures 1 000 mm for one wing
- Supply includes: mounting accessories

Code	For enclosure width (mm)	Package
ID-F-CDD4	400	1 set
ID-F-CDD6	600	1 set
ID-F-CDD8	800	1 set
ID-F-CDD10	1 000	1 set
ID-F-CDD102 *	1 000	1 set
ID-F-CDD6 *	1 200	1 set

\* Storage shelf for double-winged enclosure, width makes it suitable for mounting on the right wing.

## PARTIAL MOUNTING PLATE



- Material: 3mm zinc-plated sheet steel
- Application: to create additional front and side mounting planes, the plates are versatile and can be mounted horizontally to the appropriate enclosure width or vertically to the appropriate enclosure depth
- Mounting: mount horizontally or vertically on the frame profiles or system rails
- Supply includes: mounting accessories

Code	For enclosure width (mm)	For enclosure depth (mm)	Mounting plane height (mm)
ID-F-PMP0604	600	–	400
ID-F-PMP0604	–	400	600
ID-F-PMP0605	600	–	500
ID-F-PMP0605	–	500	600
ID-F-PMP0804	800	–	400
ID-F-PMP0804	–	400	800
ID-F-PMP0806	800	–	600
ID-F-PMP0806	–	600	800
ID-F-PMP1004	1000	–	400
ID-F-PMP1004	–	400	1000
ID-F-PMP1204	1200	–	400
ID-F-PMP1204	–	400	1200

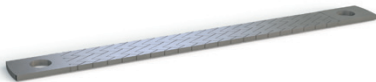
## LOCKS/LOCK INSERTS



- Application: spare inserts instead of the standard 5 mm double-bar
- Supply includes: mounting accessories

Code	Type	Package
ID-F-INLK1	Lock for inTEG FSE, key 5333	1 set
ID-F-INLK3	Lock for inTEG FSE, unique key	1 set
ID-F-INS7	Lock insert 7 mm SQUARE, black ZAMAK	1 set
ID-F-INS8	Lock insert 8 mm SQUARE, black ZAMAK	1 set
ID-F-INT7	Lock insert 7 mm TRIANGULAR, black ZAMAK	1 set
ID-F-INT8	Lock insert 8 mm TRIANGULAR, black ZAMAK	1 set
ID-F-INLKE1	Lockable VW 1 cap	1 set
ID-F-INSS	Complete handle	1 set
ID-F-INSSA	Door plate double-bar 5 mm	1 set

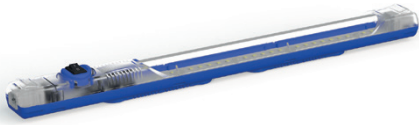
## EARTHING



- Material: tinned copper
- Supply includes: various lengths and cross-sections of flat conductors with pressed contact holes with an M8 opening

Code	Type	Package
ID-F-EK1	Flat earthing conductor for M8, length 200 mm, cross-section 16 mm <sup>2</sup>	10 pcs
ID-F-EK2	Flat earthing conductor for M8, length 200 mm, cross-section 25 mm <sup>2</sup>	10 pcs
ID-F-EK3	Flat earthing conductor for M8, length 300 mm, cross-section 16 mm <sup>2</sup>	10 pcs
ID-F-EK4	Flat earthing conductor for M8, length 300 mm, cross-section 25 mm <sup>2</sup>	10 pcs

## LED LIGHT



- Material: PC, transparent and ABS
- Application: to light up the interior of the enclosure, option of connecting several light fixtures
- Mounting: mount onto the frame profiles or by magnets
- Dimensions: 357.4 × 32 × 31.16 mm
- Degree of protection: IP20
- Supply includes: complete lighting unit with rocker switch, inter-connection cables

Code	Type	Package
ID-F-L	Lighting unit LED 4 W, 24-265 V (DC/AC), 0/50/60 Hz	1 pc

## FASTENERS



- Supply includes: M6x16 ISO 7380 Zn (ID-W-SMS6x16) cage nuts, screws, hinge, pull-out brackets and fasteners for FSE (ID-F-CK)

Code	Description	Package
ID-W-CNM6	Cage nut M6	10 pcs
ID-W-SMS6x16	Screw M6×16, ISO 7380, Zn	10 pcs
ID-W-CNM8	Cage nut M8	10 pcs
ID-W-SMS8x16	Screw M8×16, ISO 7380, Zn	10 pcs
ID-F-CK	Hinge, pull-out brackets, replacement fasteners for FSM	1 set

## EYE BOLTS



- Eye bolts for crane transport
- Application: for assembling with FSM, holes with internal threads under roof
- Material: zinc-plated carbon steel
- DIN580
- M12
- Package includes: 4 pcs

Code	Package
ID-F-EB	1 set



# FILTER FANS



## MAIN ADVANTAGES

- Quick assembly without screws and tools into a square cut-out, easy to mount with highly elastic clips
- Easy filter insert replacement from the outside without tools
- Possible to change airflow direction
- Airflow up to 800 m<sup>3</sup>/h
- Can be mounted in a enclosure with a sheet thickness of 1-2.5 mm
- IP 54 standard degree of protection
- Side and top ventilator placement
- Operating temperature range -10 °C up to +70 °C
- Polyurethane foam sealing around the whole perimeter
- Resistance against UV radiation
- Holes for installation in the CONTEG Modification Center

## DESCRIPTION

- Plastic parts made of ABS/PC mix, all parts are self-extinguishing according to UL 94V-0
- Standard color RAL 7035 (different color on request)
- Filter inserts made of synthetic fibres of class G3 according to EN

779 and class G4 according to EN 779 and UL 900 class 2 self-extinguishing in class F1 according to DIN 53 438

- Filter inserts are cleaned by washing, compressed air and banging

- Encapsulated fan ball bearings
- IP54 standard degree of protection EN 60529 and NEMA 12 according to UL 50
- IP55 settable (according to EN 60529)

- IP56 when using protective cover against splashing water
- EMC version available on request

## Fans

Code	Airflow	Dimensions H × W × D	Voltage **	Frequency	Outlet filter grid	Cut-out dimensions	Degree of protection
ID-EF-01-4	12/15 m <sup>3</sup> /h	106.5 × 106.5 × 59.9 mm	230 VAC	50/60 Hz	ID-EF-01	92 × 92 mm	IP54
ID-EF-01-1	15 m <sup>3</sup> /h	106.5 × 106.5 × 59.9 mm	24 VDC	–	ID-EF-01	92 × 92 mm	IP54
ID-EF-04-4	45/50 m <sup>3</sup> /h	150 × 150 × 65.5 mm	230 VAC	50/60 Hz	ID-EF-03	125 × 125 mm	IP54
ID-EF-04-1	47 m <sup>3</sup> /h	150 × 150 × 65.5 mm	24 VDC	–	ID-EF-03	125 × 125 mm	IP54
ID-EF-10-4	100/110 m <sup>3</sup> /h	203.9 × 203.9 × 87.5 mm	230 VAC	50/60 Hz	ID-EF-05	177 × 177 mm	IP54
ID-EF-10-1	100 m <sup>3</sup> /h	203.9 × 203.9 × 87.5 mm	24 VDC	–	ID-EF-05	177 × 177 mm	IP54
ID-EF-23-4	230/270 m <sup>3</sup> /h	250 × 250 × 115.3 mm	230 VAC	50/60 Hz	ID-EF-07	223 × 223 mm	IP54
ID-EF-22-1	225 m <sup>3</sup> /h	250 × 250 × 115.3 mm	24 VDC	–	ID-EF-07	223 × 223 mm	IP54
ID-EF-52-4	520/580 m <sup>3</sup> /h	325 × 325 × 150.7 mm	230 VAC	50/60 Hz	ID-EF-09	291 × 291 mm	IP54
ID-EF-71-4	710/800 m <sup>3</sup> /h	325 × 325 × 149 mm	230 VAC	50/60 Hz	ID-EF-09	291 × 291 mm	IP54
ID-EFT-42-4 *	420/490 m <sup>3</sup> /h	324 × 324 × 94 mm	230 VAC	50/60 Hz	ID-EF-09	fan 175 × 175 mm/grid 291 × 291 mm	IP54
ID-EO-TC	Thermostat for cooling	55 × 33 × 43 mm	250 VAC/10 A	–	–	–	IP20

\* Top version.

\*\* Other input voltage options available upon request.



For more detailed information, please refer to the product catalog "Climate control solutions" at [www.conteg.com](http://www.conteg.com) or contact our sales representatives.

# COOLING UNITS



## MAIN ADVANTAGES

- Cooling capacity from 320 W up to 4 000 W
- Easy maintenance—units don't require filter inserts
- Higher cooling capacity and reliability thanks to highly efficient condenser made of aluminium
- Units are environmentally friendly—cooling medium R134a
- Robust steel-plated or stainless steel cases
- Simple regulation and monitoring
- Easy and fast mounting (side and top version)
- High-quality components ensure long service life and reliability (such as the Mitsubishi Electric rotary piston compressor)
- Transport units in any position
- World-recognized certifications (UL, CUL, CE)
- Holes for installation in the CONTEG Modification Center

## DESCRIPTION

### Material

- Sheet steel/stainless steel

### Color

- RAL 7035

### Cooling medium

- R134a

### Degree of protection

- Outer circle IP54
- Inner circle IP24

### Mounting type

- External
- Fully recessed

### Certification

- CE, cURus

### Supply includes:

- Unit prepared for connection and immediate use

## Cooling units SLIM (wall-mounted or fully recessed mounting)

Code	Cooling capacity	Dimensions H × W × D	Voltage *	Frequency	Version	Cut-out dimensions	Degree of protection
AC-WM3-03-4000	320 W	520 × 270 × 110 mm	230 VAC	50/60 Hz	sheet steel	501 × 251 mm	IP54/IP24
AC-WM3-03-4200	320 W	520 × 270 × 110 mm	230 VAC	50/60 Hz	stainless steel	501 × 251 mm	IP54/IP24
AC-WM3-04-4000	400 W	520 × 320 × 110 mm	230 VAC	50/60 Hz	sheet steel	504 × 308 mm	IP54/IP24
AC-WM3-04-4200	400 W	520 × 320 × 110 mm	230 VAC	50/60 Hz	stainless steel	504 × 308 mm	IP54/IP24
AC-WM3-04-400H	400 W	340 × 520 × 110 mm	230 VAC	50/60 Hz	sheet steel	321 × 501 mm	IP54/IP24
AC-WM3-04-420H	400 W	340 × 520 × 110 mm	230 VAC	50/60 Hz	stainless steel	321 × 501 mm	IP54/IP24
AC-WM3-05-4000	500 W	600 × 320 × 110 mm	230 VAC	50/60 Hz	sheet steel	581 × 301 mm	IP54/IP24
AC-WM3-05-4200	500 W	600 × 320 × 110 mm	230 VAC	50/60 Hz	stainless steel	581 × 301 mm	IP54/IP24
AC-WM3-08-4000	820 W	980 × 395 × 145 mm	230 VAC	50/60 Hz	sheet steel	954 × 376 mm	IP54/IP24
AC-WM3-08-4200	820 W	980 × 395 × 145 mm	230 VAC	50/60 Hz	stainless steel	954 × 376 mm	IP54/IP24
AC-WM3-08-6000	820 W	980 × 395 × 145 mm	400 VAC	50/60 Hz	sheet steel	954 × 376 mm	IP54/IP24
AC-WM3-08-6200	820 W	980 × 395 × 145 mm	400 VAC	50/60 Hz	stainless steel	954 × 376 mm	IP54/IP24
AC-WM3-11-4000	1100 W	1250 × 395 × 145 mm	230 VAC	50/60 Hz	sheet steel	1214 × 376 mm	IP54/IP24
AC-WM3-11-4200	1100 W	1250 × 395 × 145 mm	230 VAC	50/60 Hz	stainless steel	1214 × 376 mm	IP54/IP24
AC-WM3-11-6000	1100 W	1250 × 395 × 145 mm	400 VAC	50/60 Hz	sheet steel	1214 × 376 mm	IP54/IP24
AC-WM3-11-6200	1100 W	1250 × 395 × 145 mm	400 VAC	50/60 Hz	stainless steel	1214 × 376 mm	IP54/IP24
AC-WM3-15-4000	1500 W	1550 × 395 × 145 mm	230 VAC	50/60 Hz	sheet steel	1531 × 376 mm	IP54/IP24
AC-WM3-15-4200	1500 W	1550 × 395 × 145 mm	230 VAC	50/60 Hz	stainless steel	1531 × 376 mm	IP54/IP24
AC-WM3-15-6000	1500 W	1550 × 395 × 145 mm	400 VAC	50/60 Hz	sheet steel	1531 × 376 mm	IP54/IP24
AC-WM3-15-6200	1500 W	1550 × 395 × 145 mm	400 VAC	50/60 Hz	stainless steel	1531 × 376 mm	IP54/IP24

\* Other input voltage options available upon request.

## Cooling units COMPACT (wall-mounted)

Code	Cooling capacity	Dimensions H × W × D	Voltage *	Frequency	Material	Cut-out dimensions	Degree of protection
AC-WM4-03-4000	320/360 W	500 × 280 × 200 mm	230 VAC	50/60 Hz	Sheet steel	480 × 240 mm	IP54/IP24
AC-WM4-03-4200	320/360 W	500 × 280 × 200 mm	230 VAC	50/60 Hz	Stainless steel	480 × 240 mm	IP54/IP24
AC-WM4-05-4000	550/620 W	650 × 315 × 260 mm	230 VAC	50/60 Hz	Sheet steel	635 × 275 mm	IP54/IP24
AC-WM4-05-4200	550/620 W	650 × 315 × 260 mm	230 VAC	50/60 Hz	Stainless steel	635 × 275 mm	IP54/IP24
AC-WM4-05-6000	550/620 W	650 × 315 × 260 mm	400 VAC	50/60 Hz	Sheet steel	635 × 275 mm	IP54/IP24
AC-WM4-05-6200	550/620 W	650 × 315 × 260 mm	400 VAC	50/60 Hz	Stainless steel	635 × 275 mm	IP54/IP24
AC-WM4-08-4000	750/780 W	650 × 315 × 260 mm	230 VAC	50/60 Hz	Sheet steel	635 × 275 mm	IP54/IP24
AC-WM4-08-4200	750/780 W	650 × 315 × 260 mm	230 VAC	50/60 Hz	Stainless steel	635 × 275 mm	IP54/IP24
AC-WM4-08-6000	750 W	650 × 315 × 260 mm	400 VAC	50/60 Hz	Sheet steel	635 × 275 mm	IP54/IP24
AC-WM4-08-6200	750 W	650 × 315 × 260 mm	400 VAC	50/60 Hz	Stainless steel	635 × 275 mm	IP54/IP24
AC-WM4-10-4000	1000/1080 W	650 × 315 × 260 mm	230 VAC	50/60 Hz	Sheet steel	635 × 275 mm	IP54/IP24
AC-WM4-10-4200	1000/1080 W	650 × 315 × 260 mm	230 VAC	50/60 Hz	Stainless steel	635 × 275 mm	IP54/IP24
AC-WM4-10-6000	1000 W	650 × 315 × 260 mm	400 VAC	50/60 Hz	Sheet steel	635 × 275 mm	IP54/IP24
AC-WM4-10-6200	1000 W	650 × 315 × 260 mm	400 VAC	50/60 Hz	Stainless steel	635 × 275 mm	IP54/IP24
AC-WM4-15-4000	1500/1630 W	980 × 395 × 260 mm	230 VAC	50/60 Hz	Sheet steel	920 × 335 mm	IP54/IP24
AC-WM4-15-4200	1500/1630 W	980 × 395 × 260 mm	230 VAC	50/60 Hz	Stainless steel	920 × 335 mm	IP54/IP24
AC-WM4-15-6000	1500 W	980 × 395 × 260 mm	400 VAC	50/60 Hz	Sheet steel	920 × 335 mm	IP54/IP24
AC-WM4-15-6200	1500 W	980 × 395 × 260 mm	400 VAC	50/60 Hz	Stainless steel	920 × 335 mm	IP54/IP24
AC-WM4-20-4000	2000 W	980 × 395 × 260 mm	230 VAC	50/60 Hz	Sheet steel	920 × 335 mm	IP54/IP24
AC-WM4-20-4200	2000 W	980 × 395 × 260 mm	230 VAC	50/60 Hz	Stainless steel	920 × 335 mm	IP54/IP24
AC-WM4-20-6000	2000 W	980 × 395 × 260 mm	400 VAC	50/60 Hz	Sheet steel	920 × 335 mm	IP54/IP24
AC-WM4-20-6200	2000 W	980 × 395 × 260 mm	400 VAC	50/60 Hz	Stainless steel	920 × 335 mm	IP54/IP24
AC-WM4-25-4000	2500 W	1230 × 500 × 340 mm	230 VAC	50/60 Hz	Sheet steel	1130 × 430 mm	IP54/IP24
AC-WM4-25-4200	2500 W	1230 × 500 × 340 mm	230 VAC	50/60 Hz	Stainless steel	1130 × 430 mm	IP54/IP24
AC-WM4-25-6000	2500 W	1230 × 500 × 340 mm	400 VAC	50/60 Hz	Sheet steel	1130 × 430 mm	IP54/IP24
AC-WM4-25-6200	2500 W	1230 × 500 × 340 mm	400 VAC	50/60 Hz	Stainless steel	1130 × 430 mm	IP54/IP24
AC-WM4-30-4000	3000 W	1230 × 500 × 340 mm	230 VAC	50/60 Hz	Sheet steel	1130 × 430 mm	IP54/IP24
AC-WM4-30-4200	3000 W	1230 × 500 × 340 mm	230 VAC	50/60 Hz	Stainless steel	1130 × 430 mm	IP54/IP24
AC-WM4-30-6000	3000 W	1230 × 500 × 340 mm	400 VAC	50/60 Hz	Sheet steel	1130 × 430 mm	IP54/IP24
AC-WM4-30-6200	3000 W	1230 × 500 × 340 mm	400 VAC	50/60 Hz	Stainless steel	1130 × 430 mm	IP54/IP24
AC-WM4-40-4000	4000 W	1230 × 500 × 340 mm	230 VAC	50/60 Hz	Sheet steel	1130 × 430 mm	IP54/IP24
AC-WM4-40-4200	4000 W	1230 × 500 × 340 mm	230 VAC	50/60 Hz	Stainless steel	1130 × 430 mm	IP54/IP24
AC-WM4-40-6000	4000 W	1230 × 500 × 340 mm	400 VAC	50/60 Hz	Sheet steel	1130 × 430 mm	IP54/IP24
AC-WM4-40-6200	4000 W	1230 × 500 × 340 mm	400 VAC	50/60 Hz	Stainless steel	1130 × 430 mm	IP54/IP24

\* Other input voltage options available upon request.

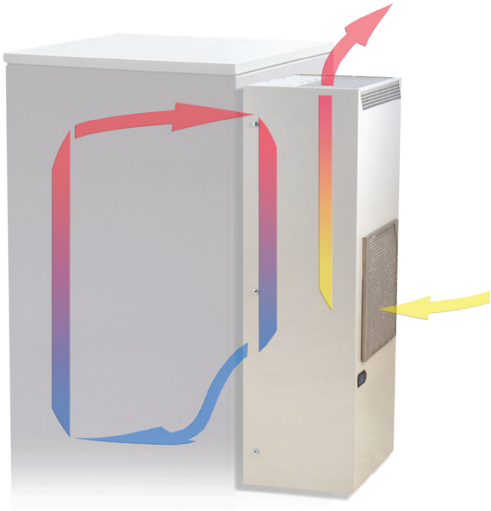
## Cooling units TOP (top mounting)

Code	Cooling capacity	Dimensions H × W × D	Voltage *	Frequency	Material	Cut-out dimensions	Degree of protection
AC-TM3-04-4000	450/460 W	230 × 430 × 330 mm	230 VAC	50/60 Hz	Sheet steel	142 × 98 mm/142 × 147.5 mm	IP54/IP24
AC-TM3-04-4200	450/460 W	230 × 430 × 330 mm	230 VAC	50/60 Hz	Stainless steel	142 × 98 mm/142 × 147.5 mm	IP54/IP24
AC-TM3-11-4000	1100/1150 W	400 × 600 × 400 mm	230 VAC	50/60 Hz	Sheet steel	108 × 530 mm (×2)	IP54/IP24
AC-TM3-11-4200	1100/1150 W	400 × 600 × 400 mm	230 VAC	50/60 Hz	Stainless steel	108 × 530 mm (×2)	IP54/IP24
AC-TM3-11-6000	1100/1150 W	400 × 600 × 400 mm	400 VAC	50/60 Hz	Sheet steel	108 × 530 mm (×2)	IP54/IP24
AC-TM3-11-6200	1100/1150 W	400 × 600 × 400 mm	400 VAC	50/60 Hz	Stainless steel	108 × 530 mm (×2)	IP54/IP24
AC-TM3-15-4000	1500 W	410 × 600 × 400 mm	230 VAC	50/60 Hz	Sheet steel	363 × 236.4 mm (×2)	IP54/IP24
AC-TM3-15-4200	1500 W	410 × 600 × 400 mm	230 VAC	50/60 Hz	Stainless steel	363 × 236.4 mm (×2)	IP54/IP24
AC-TM3-15-6000	1500 W	410 × 600 × 400 mm	400 VAC	50/60 Hz	Sheet steel	363 × 236.4 mm (×2)	IP54/IP24
AC-TM3-15-6200	1500 W	410 × 600 × 400 mm	400 VAC	50/60 Hz	Stainless steel	363 × 236.4 mm (×2)	IP54/IP24
AC-TM3-20-6000	2000 W	410 × 600 × 400 mm	400 VAC	50/60 Hz	Sheet steel	363 × 236.4 mm (×2)	IP54/IP24
AC-TM3-20-6200	2000 W	410 × 600 × 400 mm	400 VAC	50/60 Hz	Stainless steel	363 × 236.4 mm (×2)	IP54/IP24

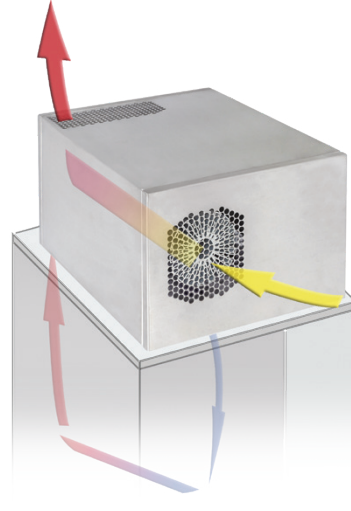
\* Other input voltage options available upon request.

# AIR FLOW

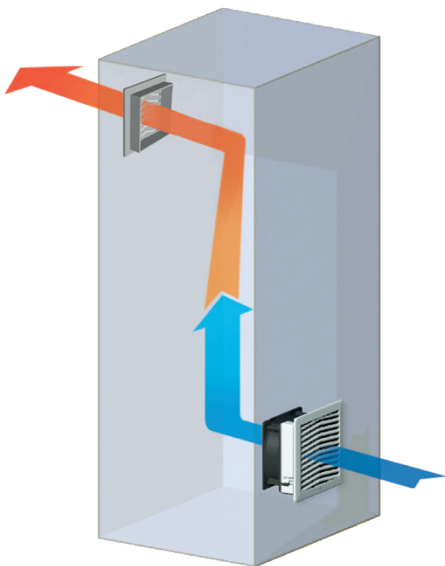
Cooling units—wall-mounted



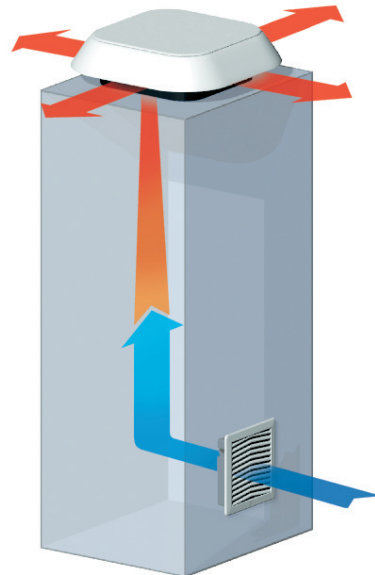
Cooling units—top



Fans—wall-mounted



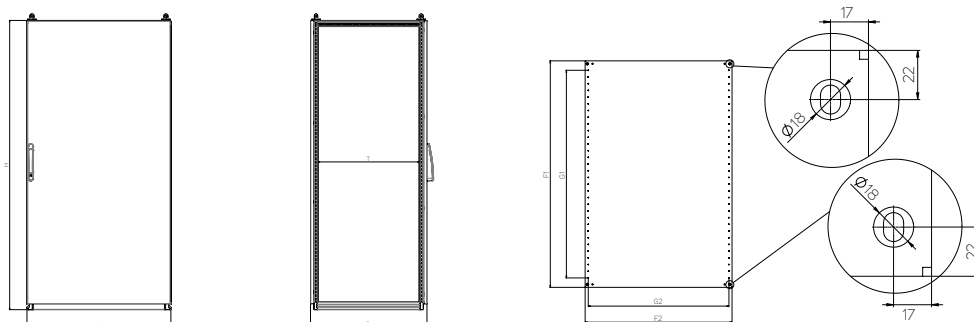
Fans—top



# FSE—FREE-STANDING ENCLOSURES

## TECHNICAL DRAWINGS

### FSE—free-standing enclosures—sheet steel



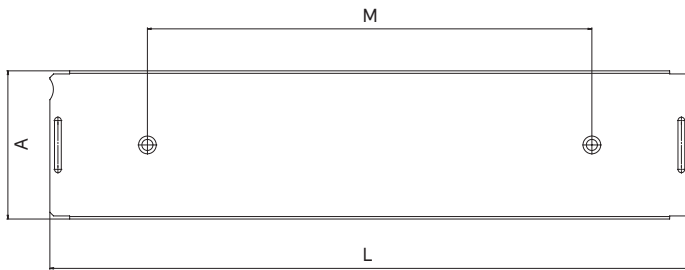
Code	Height (mm)	Width (mm)	Depth (mm)		Mounting plate (mm)				Material thickness (mm)			Type of cable gland plate	# of doors
	H *	W *	D *	T	F1	F2	G1	G2	Enclosure	Door	Mounting plate		
FSE-180405	1800	400	500	410	1691.2	297	1550	250	1.25	2	3	B1; C1	1
FSE-180406	1800	400	600	510	1691.2	297	1550	250	1.25	2	3	A1; B1; C1	1
FSE-180604	1800	600	400	310	1691.2	497	1550	450	1.25	2	3	A6; B2	1
FSE-180605	1800	600	500	410	1691.2	497	1550	450	1.25	2	3	B2; C2	1
FSE-180606	1800	600	600	510	1691.2	497	1550	450	1.25	2	3	A2; B2; C2	1
FSE-180804	1800	800	400	310	1691.2	697	1550	650	1.25	2	3	A7; B3	1
FSE-180805	1800	800	500	410	1691.2	697	1550	650	1.25	2	3	B3; C3	1
FSE-280805	1800	800	500	410	1691.2	697	1550	650	1.25	2	3	B3; C3	2
FSE-180806	1800	800	600	510	1691.2	697	1550	650	1.25	2	3	A3; B3; C3	1
FSE-280806	1800	800	600	510	1691.2	697	1550	650	1.25	2	3	A3; B3; C3	2
FSE-181004	1800	1000	400	310	1691.2	897	1550	850	1.25	2	3	A8; B4	1
FSE-281004	1800	1000	400	310	1691.2	897	1550	850	1.25	2	3	A8; B4	2
FSE-181005	1800	1000	500	410	1691.2	897	1550	850	1.25	2	3	B4; C4	1
FSE-181006	1800	1000	600	510	1691.2	897	1550	850	1.25	2	3	A4; B4; C4	1
FSE-281204	1800	1200	400	310	1691.2	1097	1550	1050	1.25	2	3	A9; B5	2
FSE-281205	1800	1200	500	410	1691.2	1097	1550	1050	1.25	2	3	B5; C5	2
FSE-281206	1800	1200	600	510	1691.2	1097	1550	1050	1.25	2	3	A5; B5; C5	2
FSE-200405	2000	400	500	410	1891.2	297	1750	250	1.25	2	3	B1; C1	1
FSE-200406	2000	400	600	510	1891.2	297	1750	250	1.25	2	3	A1; B1; C1	1
FSE-200604	2000	600	400	310	1891.2	497	1750	250	1.25	2	3	A6; B2	1
FSE-200605	2000	600	500	410	1891.2	497	1750	250	1.25	2	3	B2; C2	1
FSE-200606	2000	600	600	510	1891.2	497	1750	250	1.25	2	3	A2; B2; C2	1
FSE-200608	2000	600	800	710	1891.2	497	1750	250	1.25	2	3	A2; 2× B2; C2	1
FSE-200804	2000	800	400	310	1891.2	697	1750	650	1.25	2	3	A7; B3	1
FSE-200805	2000	800	500	410	1891.2	697	1750	650	1.25	2	3	B3; C3	1
FSE-200806	2000	800	600	510	1891.2	697	1750	650	1.25	2	3	A3; B3; C3	1
FSE-200808	2000	800	800	710	1891.2	697	1750	650	1.25	2	3	A3; 2× B3; C3	1
FSE-201004	2000	1000	400	310	1891.2	897	1750	850	1.25	2	3	A8; B4	1
FSE-301004	2000	1000	400	310	1891.2	897	1750	850	1.25	2	3	A8; B4	2
FSE-201005	2000	1000	500	410	1891.2	897	1750	850	1.25	2	3	B4; C4	1
FSE-301005	2000	1000	500	410	1891.2	897	1750	850	1.25	2	3	B4; C4	2
FSE-201006	2000	1000	600	510	1891.2	897	1750	850	1.25	2	3	A4; B4; C4	1
FSE-301006	2000	1000	600	510	1891.2	897	1750	850	1.25	2	3	A4; B4; C4	2
FSE-201008	2000	1000	800	710	1891.2	897	1750	850	1.25	2	3	A4; 2× B4; C4	1

\* Internal dimensions: H—90 mm, W—90 mm, D—90 mm.

Code	Height (mm)	Width (mm)	Depth (mm)		Mounting plate (mm)				Material thickness (mm)			Type of cable gland plate	# of doors
	H *	W *	D *	T	F1	F2	G1	G2	Enclosure	Door	Mounting plate		
FSE-301204	2 000	1200	400	310	1891.2	1097	1750	1050	1.25	2	3	2× A9; 2× B5	2
FSE-301205	2 000	1200	500	410	1891.2	1097	1750	1050	1.25	2	3	2× B5; 2× C5	2
FSE-301206	2 000	1200	600	510	1891.2	1097	1750	1050	1.25	2	3	2× A5; 2× B5; 2× C5	2
FSE-301208	2 000	1200	800	710	1891.2	1097	1750	1050	1.25	2	3	2× A5; 4× B5; 2× C5	2
FSE-220406	2 200	400	600	510	2 091.2	297	1950	250	1.25	2	3	A1; B1; C1	1
FSE-220606	2 200	600	600	510	2 091.2	497	1950	450	1.25	2	3	A2; B2; C2	1
FSE-220608	2 200	600	800	710	2 091.2	497	1950	450	1.25	2	3	A2; 2× B2; C2	1
FSE-220806	2 200	800	600	510	2 091.2	697	1950	650	1.25	2	3	A3; B3; C3	1
FSE-220808	2 200	800	800	710	2 091.2	697	1950	650	1.25	2	3	A3; 2× B3; C3	1
FSE-221006	2 200	1000	600	510	2 091.2	897	1950	850	1.25	2	3	A4; B4; C4	1
FSE-321206	2 200	1200	600	510	2 091.2	1097	1950	1050	1.25	2	3	2× A5; 2× B5; 2× C5	2
FSE-321208	2 200	1200	800	710	2 091.2	1097	1950	1050	1.25	2	3	2× A5; 4× B5; 2× C5	2

\* Internal dimensions: H—90 mm, W—90 mm, D—90 mm.

## Cable gland plate for free-standing enclosures FSE



Type	Dimensions W × D (mm)	A	L	M
<b>Cable gland plate type A</b>				
A1	400 × 90	90	257	100
A2	600 × 90	90	457	300
A3	800 × 90	90	657	500
A4	1000 × 90	90	857	700
A5	1200 × 90	90	518	360
A6	600 × 120	120	457	300
A7	800 × 120	120	657	500
A8	1000 × 120	120	857	700
A9	1200 × 120	120	518	360
<b>Cable gland plate type B</b>				
B1	400 × 200	200	257	100
B2	600 × 200	200	457	300
B3	800 × 200	200	657	500
B4	1000 × 200	200	857	700
B5	1200 × 200	200	518	360
<b>Cable gland plate type C</b>				
C1	400 × 235	235	257	100
C2	600 × 235	235	457	300
C3	800 × 235	235	657	500
C4	1000 × 235	235	857	700
C5	1200 × 235	235	518	360

## FSE—FREE-STANDING ENCLOSURES

# HEAT LOSS DISPERSION

FSE—free-standing enclosures—  
measured with heat inside enclosure  $\Delta T = 15\text{ K}$

Code	Enclosure dimensions (mm)			Thickness of the material (mm)		Number of doors (pcs)	Total area of enclosure (m <sup>2</sup> )	Total power dissipation (W)
	Height	Width	Depth	Body	Door			
FSE-180405	1800	400	500	1.5	2.00	1	2.920	149.5
FSE-180406	1800	400	600	1.5	2.00	1	4.080	197.4
FSE-180604	1800	600	400	1.5	2.00	1	4.080	211.8
FSE-180605	1800	600	500	1.5	2.00	1	4.560	231.6
FSE-180606	1800	600	600	1.5	2.00	1	5.040	251.5
FSE-180804	1800	800	400	1.5	2.00	1	4.960	262.6
FSE-180805	1800	800	500	1.5	2.00	1	5.480	284.1
FSE-280805	1800	800	500	1.5	2.00	2	5.480	284.1
FSE-180806	1800	800	600	1.5	2.00	1	6.000	305.6
FSE-280806	1800	800	600	1.5	2.00	2	6.000	305.6
FSE-181004	1800	1000	400	1.5	2.00	1	5.840	313.4
FSE-281004	1800	1000	400	1.5	2.00	2	5.840	313.4
FSE-181005	1800	1000	500	1.5	2.00	1	6.400	336.5
FSE-181006	1800	1000	600	1.5	2.00	1	6.960	359.7
FSE-281204	1800	1200	400	1.5	2.00	2	6.720	364.2
FSE-281205	1800	1200	500	1.5	2.00	2	7.320	389.0
FSE-281206	1800	1200	600	1.5	2.00	2	7.920	413.8
FSE-200405	2000	400	500	1.5	2.00	1	4.000	197.3
FSE-200406	2000	400	600	1.5	2.00	1	4.480	217.1
FSE-200604	2000	600	400	1.5	2.00	1	4.480	233.2
FSE-200605	2000	600	500	1.5	2.00	1	5.000	254.6
FSE-200606	2000	600	600	1.5	2.00	1	5.520	276.1
FSE-200608	2000	600	800	1.5	2.00	1	6.560	319.0
FSE-200804	2000	800	400	1.5	2.00	1	5.440	288.9
FSE-200805	2000	800	500	1.5	2.00	1	6.000	312.0
FSE-200806	2000	800	600	1.5	2.00	1	6.560	335.1
FSE-200808	2000	800	800	1.5	2.00	1	7.680	381.3
FSE-201004	2000	1000	400	1.5	2.00	1	6.400	344.6
FSE-301004	2000	1000	400	1.5	2.00	2	6.400	344.6
FSE-201005	2000	1000	500	1.5	2.00	1	7.000	369.3
FSE-301005	2000	1000	500	1.5	2.00	2	7.000	369.3
FSE-201006	2000	1000	600	1.5	2.00	1	7.600	394.1
FSE-301006	2000	1000	600	1.5	2.00	2	7.600	394.1
FSE-201008	2000	1000	800	1.5	2.00	1	8.800	443.7
FSE-301204	2000	1200	400	1.5	2.00	2	7.360	400.3
FSE-301205	2000	1200	500	1.5	2.00	2	8.000	426.7
FSE-301206	2000	1200	600	1.5	2.00	2	8.640	453.1
FSE-301208	2000	1200	800	1.5	2.00	2	9.920	506.0
FSE-220406	2200	400	600	1.5	2.00	1	4.880	236.8
FSE-220606	2200	600	600	1.5	2.00	1	6.000	300.7
FSE-220608	2200	600	800	1.5	2.00	1	7.120	347.0
FSE-220806	2200	800	600	1.5	2.00	1	7.120	364.7
FSE-220808	2200	800	800	1.5	2.00	1	8.320	414.2
FSE-221006	2200	1000	600	1.5	2.00	1	8.240	428.6
FSE-321206	2200	1200	600	1.5	2.00	2	9.360	492.5
FSE-321208	2200	1200	800	1.5	2.00	2	10.720	548.6



**CONTEG, spol. s r.o.**

Stetkova 1638/18

140 00 Prague 4

Czech Republic

Tel.: +420 565 300 358

[conteg@conteg.com](mailto:conteg@conteg.com)

[www.conteg.com](http://www.conteg.com)

**CONTEG**